

# Screen Capture + Print

© by Infonautics GmbH, Switzerland

**Screen Capture + Print** is a freeware software for Windows™ and allows to capture the screen content or part of it to the clipboard, printed directly or saved as a picture.

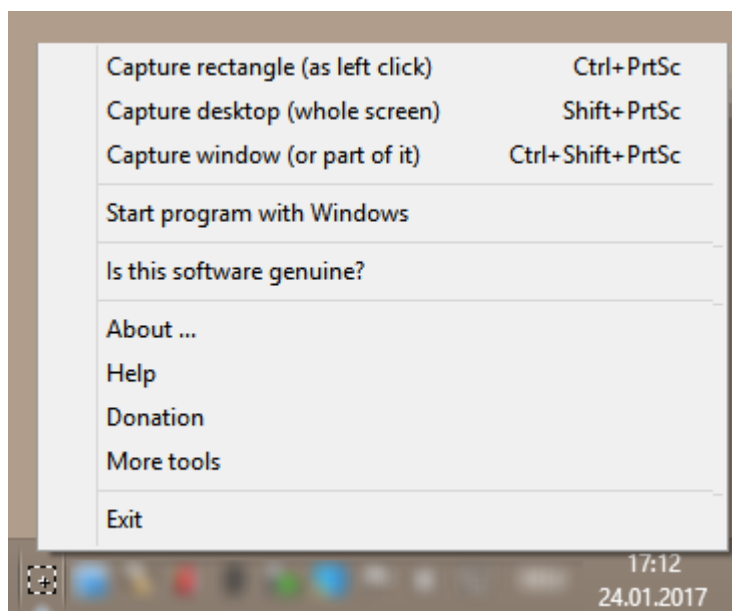
## Installation

This program does not have to be installed explicitly (portable application). Copy the two files „ScreenCapturePrint.exe“ and „ScreenCapturePrint.pdf“ into a directory of your choice and start the program „ScreenCapturePrint.exe“ or the corresponding manual „ScreenCapturePrint.pdf“ whenever needed.

The program is digitally signed. Before starting please check the **validity of the Digital Signature** of the executable EXE-file (context menu: Properties: Digital Signatures: open Infonautics GmbH). If the signature is invalid or missing then the program has been altered by third parties and may thereby cause harm. In this case please refer to the software manufacturer for the original free software (see contact below).

## Application

After starting the program the corresponding icon shows up in the taskbar (system-tray). To start the capture procedure please click on the program icon or use the right mouse click on the icon to show the context menu.



Use left mouse click on the icon or choose „Capture Rectangle“ from the context menu in order to capture any part of the screen. Then drag a rectangle with the mouse to define the requested screen area.

In order to capture the full screen click on the icon and afterwards once on the desktop or choose „Capture Desktop“ from the context menu.


In order to select a single window or a part of it please choose „Capture Window“ from the context menu. Then move around with the mouse from window to window and click on a part to select it. To capture a complete window move the mouse pointer to its title bar and click on it.


To start the program automatically with Windows, please mark the option "Start program with Windows" in the program menu.

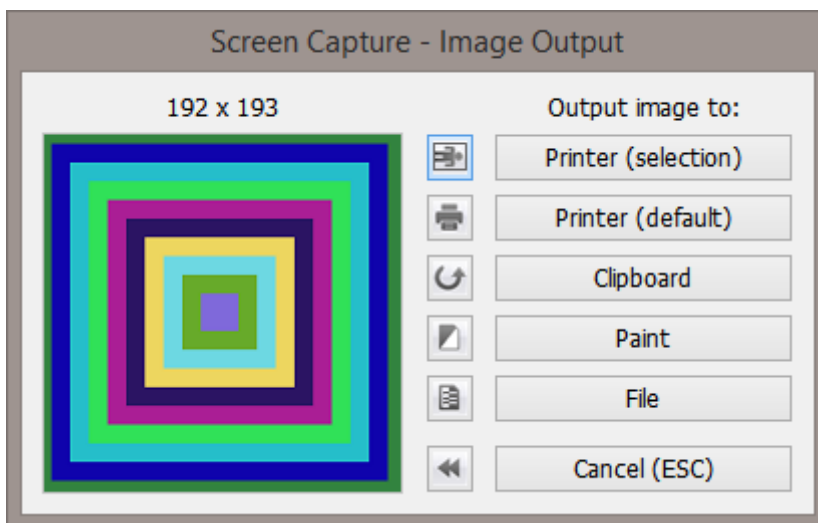
## Image Output

After having selected the requested screen area the captured output can be saved as follows: the image can either be copied to the clipboard for further use in other applications, it can directly be printed, saved to a file or opened directly in Paint.




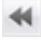
The output to the printer can be done via the printer selection dialog (selection) or directly to the default printer (default).

The default printer can be set and configured via the option  .

With the option  the image orientation is always automatically adjusted to the paper orientation when printing.



The following options can be used to adjust the image before output:

-  Rotate image 90° to the left (can be repeated several times without loss).
-  Convert image to grayscale (black/white instead of color).
-  Invert image (to better print white text on black background).
-  Reset all image adjustments.

Further output can be canceled with the button "Cancel" or via the "Esc" key.

## Features

- Capture of any requested screen area:  
Click on icon in task bar and use the mouse to drag requested selection.  
Ctrl+PrtSc can be used to start capturing including open menus and tool tips.
- Capture of full screen:  
Click on icon and then click on desktop once; or use menu „Capture Desktop“.  
Shift+PrtSc can be used to capture the full screen including open menus and tool tips.
- Capture of a single window with or without frame;  
Menu „Capture Window“, then click on title bar or content of any window.  
Ctrl+Shift+PrtSc can be used to start capturing a single window or part of it.
- Support of desktops spanning multiple monitors.
- Support of transparent windows and screen areas.
- Support of windows displaying video (without hardware video overlay).
- Output of captured screen area to clipboard for further use in other applications.
- Printing of captured screen area.
- Saving captured screen area to file (JPG GIF BMP PNG TIF).
- The latest selection of output path and file format will be kept as settings.
- Output of captured screen area directly to Paint.
- Image adjustments before output: rotate, grayscale (b/w), invert (negative).
- Automatic start of the program at Windows login.

## System Requirements

Microsoft Windows™ 7/8/10.

Program space on hard disk less than 1 MB.

## Developer Version (OEM Branding)

In case you would like to deliver this application within your own software, we could customize the tool with your company name and delete the menu entries „Donation“ and „More Tools“. For further details please contact us at: [support@infonautics.ch](mailto:support@infonautics.ch)

## Contact

Infonautics GmbH  
Eichholzweg 16  
CH-6312 Steinhausen  
Switzerland

Internet: <http://www.infonautics.ch/screencaptureprint>  
E-Mail: [support@infonautics.ch](mailto:support@infonautics.ch)