



Push Installer Administration Guide

Version 1.1

IMPORTANT:

Information in this document is subject to change without notice.

ALL SOFTWARE AND ASSOCIATED MATERIAL DISTRIBUTED BY MOTIVATE SYSTEMS IS PROVIDED "AS IS" WITH NO WARRANTY OR GAURANTEE. MOTIVATE SYSTEMS SHALL NOT BE ACCOUNTABLE FOR ANY MISINTERPETATION OR ERROR RELATED HEREIN.

Product names referenced herein may be trademarks of other companies. Motivate Systems is a registered trademark of Motivate Systems LLC.

Table of Contents

- I. Overview**
- II. Setup Procedure**
- III. Entering Setup Mode**
- IV. Setting Required Values**
 - a. License Key
 - b. Program Information
- V. Setting Optional Values**
 - a. Enable Logging
- VI. Deployment**

I. Overview

During a boot cycle, Domain Computers process effective Group Policy settings. When Push Installer is applied as a Computer Startup Script, it will execute with local administrative permissions to manage all of your software deployments silently. To prepare your software deployments follow the setup procedure below.

II. Setup Procedure

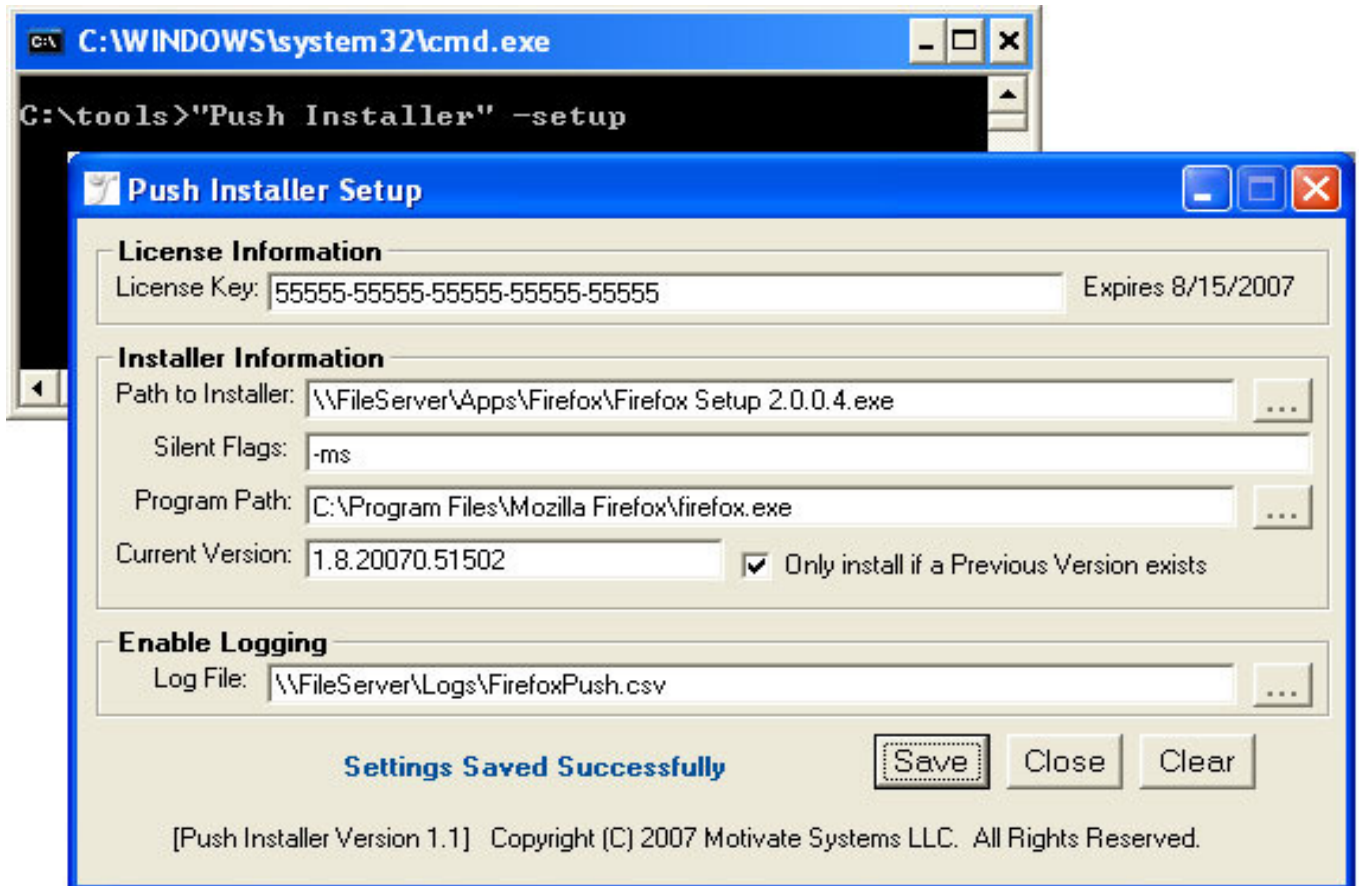
1. Download or copy the installation files of the program you wish to deploy to your file server.

NOTE: The Active Directory Domain Computers Group must have READ access to these installations files on the file server.

2. Manually install the program on a test computer
3. Configure Push Installer on the test computer
 - a. Enter Setup Mode ("Push Installer.exe" –setup)
 - b. Type the path of the installer (UNC path to file server)
 - c. Include flags to make the install silent
 - d. Browse to a file that was copied to the computer during installation
(This will auto-populate the version number for Push Installer to use.)
 - e. Enter the path of the Log file
 - f. Save the configuration
4. Copy "Push Installer.exe" and the settings file "Push Installer.ini" to your file server
5. Deploy Push Installer using Active Directory Group Policy as a Computer Startup script

III. Enter Setup Mode

To enter setup mode, simply double click the Setup.bat file or run "Push Installer.exe" from the command line using the -setup flag. For example:



This will launch the Graphical User Interface as shown above. The figure above contains valid settings for all fields (with the exception of a valid license key). A valid license key can be obtained from www.MotivateSystems.com.

IMPORTANT: When you click Save, Push Installer creates a settings file called "Push Installer.ini" in the current directory. You must have write access in the current directory to successfully save the settings.

IV. Setting Required Values

License Key

Push Installer provides a fully functional time limited evaluation with no restrictions. After your evaluation period expires, you can continue to use Push Installer by purchasing a license key from www.MotivateSystems.com.

Path to Installer

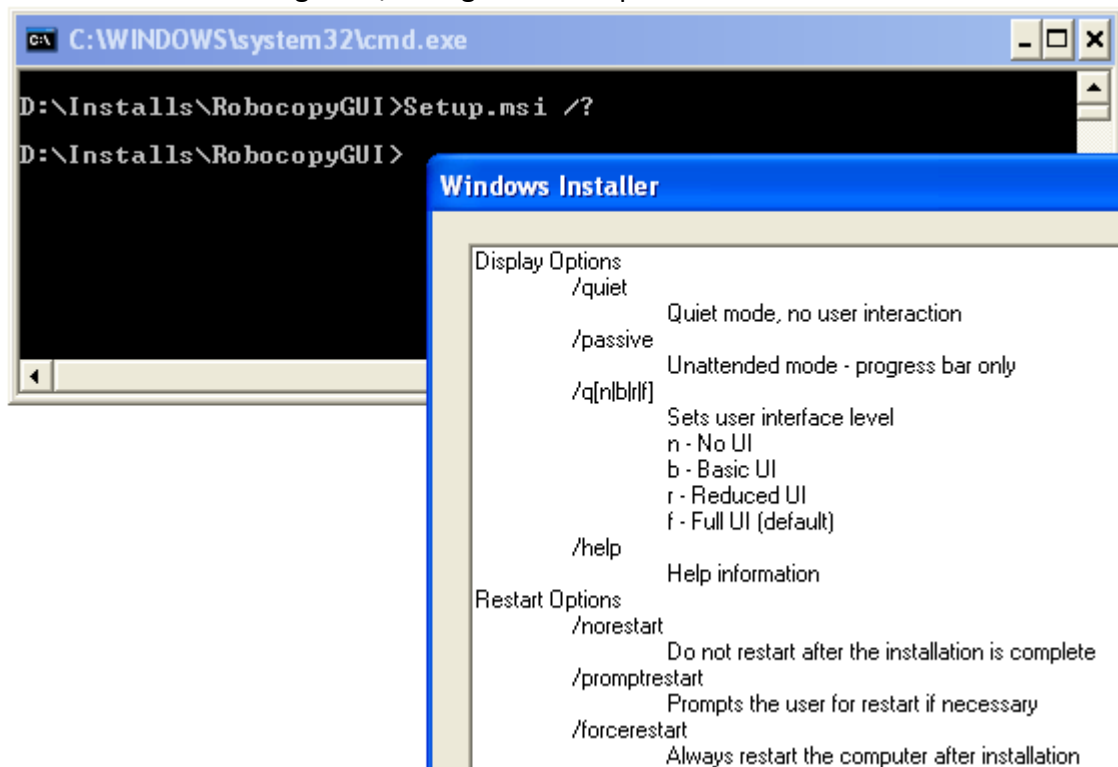
For the program you wish to push, place the installation files on your file server. Enter the UNC path to the setup program.

NOTE: The Active Directory Domain Computers Group must have READ access to these installations files on the file server.

Path to Installer:	<input type="text" value="\\FileServer\Apps\Firefox\Firefox Setup 2.0.0.4.exe"/>
Silent Flags:	<input type="text" value="-ms"/>

Silent Flags

Specify command line parameters to suppress any User Interfaces. If you do not know what flags to use, look on the vendor's website, use search engines or try to launch the installer from the command line using the "/?" flag. For example:



Examples:

- [Mozilla Firefox 2.0.0.4] **Firefox Setup 2.0.0.4.exe -ms**
- [Symantec AntiVirus] **Symantec AntiVirus.msi /qn /norestart**
- [Oracle JInitiator 1.3.1.28] **Setup.exe /s /f1"setup.iss"**

For complete examples and more, visit the Push Installer product page at www.MotivateSystems.com. In addition our staff will answer any Push Installer questions and will even help research silent flags. Send email to support@motivatesystems.com. AppDeploy.com is also a great source for determining silent install flags for common installers.

Program Path

Enter the path of a file that is copied to computers during installation. For example when deploying Mozilla Firefox, use: ***"c:\Program Files\Mozilla Firefox\firefox.exe"***

We recommend running the installer on a test computer then configuring Push Installer on that computer. Browse to the program installation directory and choose a file that was copied to the system during the install. The Current Version parameter is automatically determined by Push Installer.



The screenshot shows a configuration window with two main fields. The 'Program Path' field contains the text 'C:\Program Files\Mozilla Firefox\firefox.exe'. The 'Current Version' field contains the text '1.8.20070.51502'. To the right of the 'Current Version' field is a checkbox labeled 'Only install if a Previous Version exists', which is currently checked.

NOTE: The Current Version will sometimes differ from the Product Version. This is to be expected. In the example above, 1.8.20070.51502 is for version 2.0.0.4 of Mozilla Firefox.

Only install if a Previous Version exists

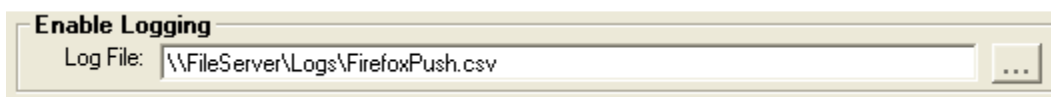
Use this option if you want to perform a targeted upgrade. When Push Installer executes, it will check to see if the Program Path exists. In the example above if ***"c:\Program Files\Mozilla Firefox\firefox.exe"*** does not exist then Push Installer will not run the installer on that computer. Instead it will only run the installer on computers that already have a previous version of Firefox installed.

V. Setting Optional Values

Enable Logging

Push Installer records the Computer Name, the Last Logged on Username, Date/Time and whether or not the installation was successful. The information is written in Comma Delimited format so it can be converted to an Excel Document when opened with Microsoft Excel.

To enable logging, specify the file path of the log file. Use .csv for the file extension.



The screenshot shows a section titled 'Enable Logging'. Below this title is a 'Log File' field containing the text '\\FileServer\Logs\FirefoxPush.csv'. To the right of the 'Log File' field is a button with three dots, indicating a browse function.

NOTE: The Domain Computers Group must have WRITE access to the Log File location.

VI. Deployment

Copy Push Installer files to your file server

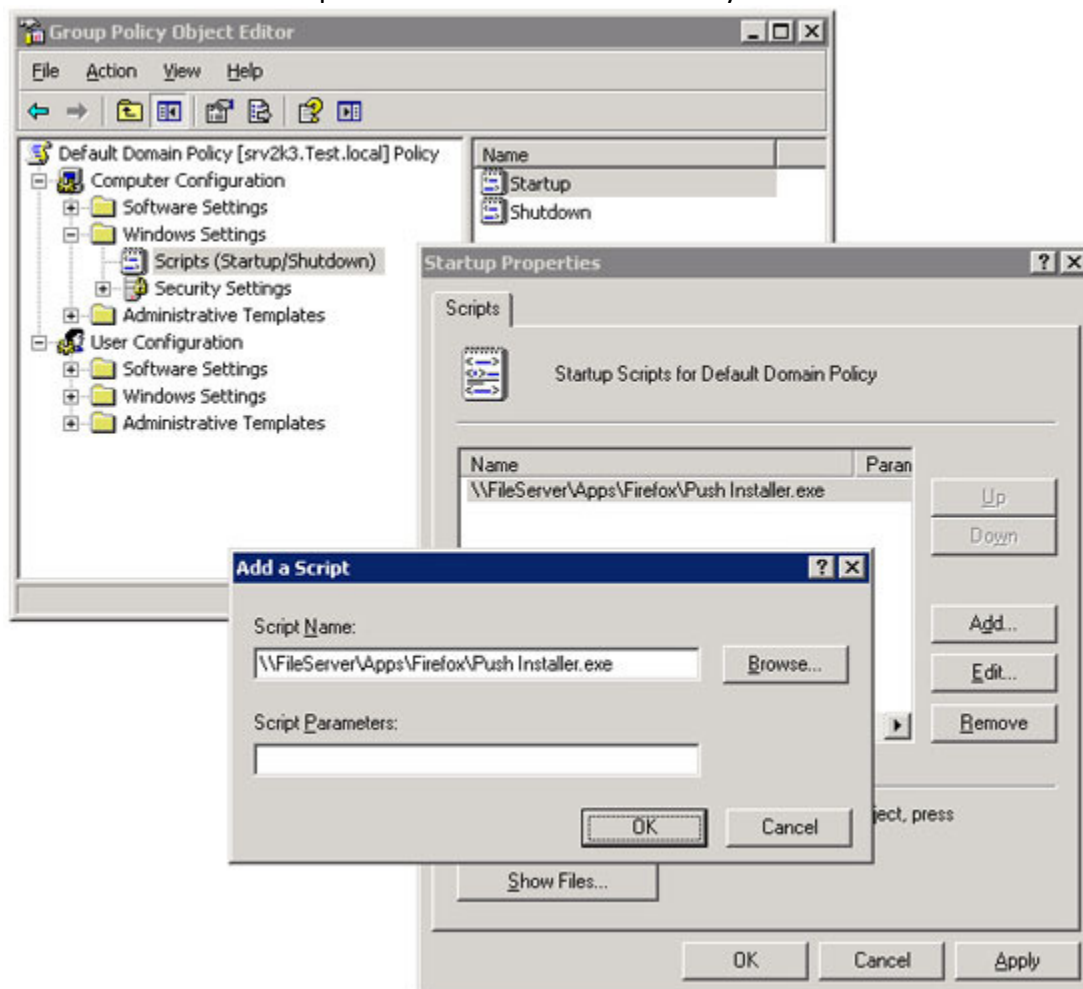
After you have configured Push Installer, copy “Push Installer.exe” and the settings file, “Push Installer.ini”, to your file server.

NOTE: The Active Directory Domain Computers Group must have READ access to these installations files on the file server.

Deploy Push Installer

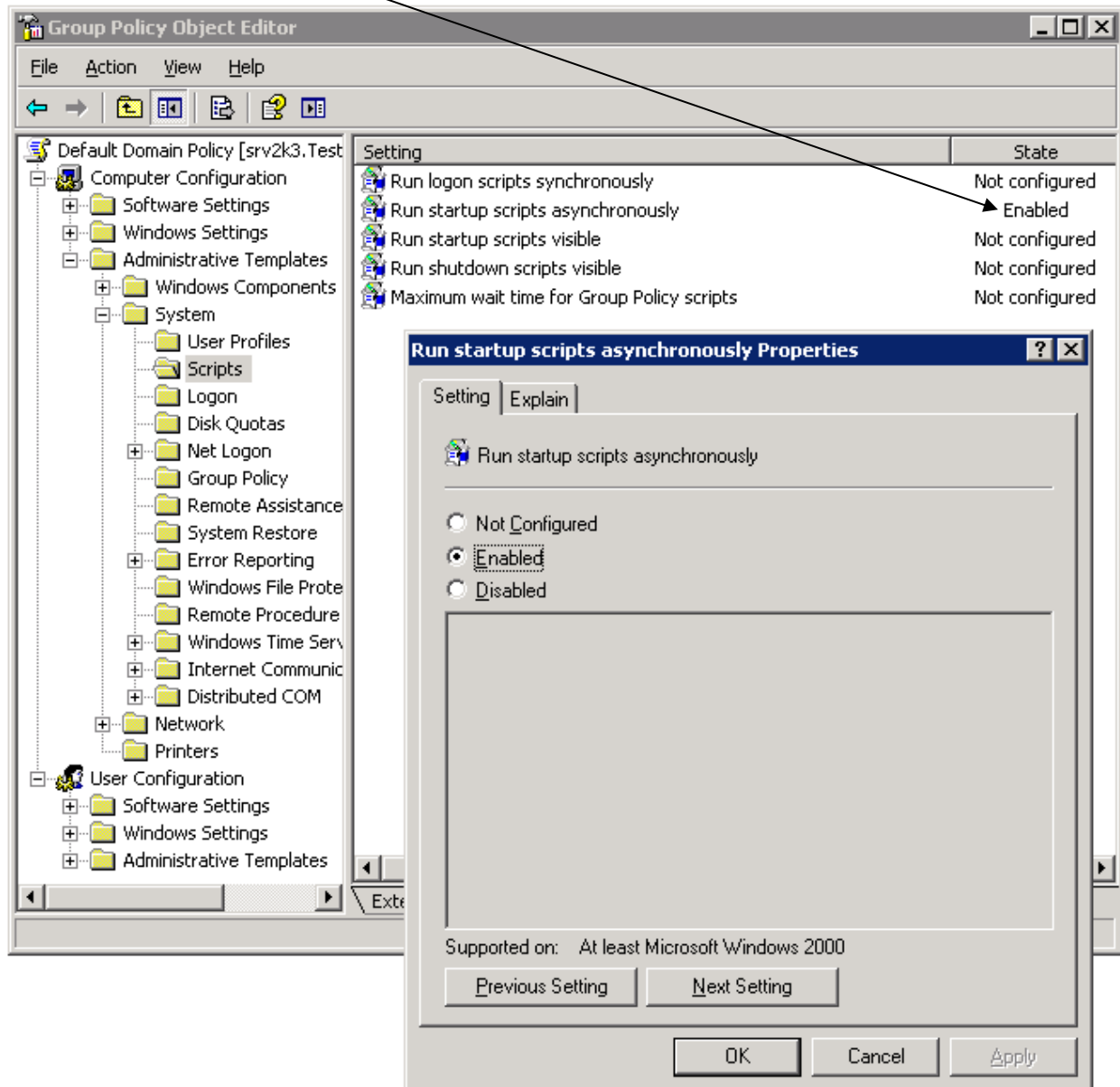
Deploy Push Installer by using Active Directory Group Policy. You can target a specific OU or you can apply it to the Default Domain Policy. From an administrative computer:

1. Launch the Active Directory Users and Computers console.
2. Edit the Group Policy Object of your choice.
3. Navigate to the following path:
Computer Configuration->Windows Settings->Scripts (Startup/Shutdown)
4. Double click **Scripts (Startup/Shutdown)** then click the Add button.
5. Add the UNC path to “Push Installer.exe” on your file server.



NOTE: It is good practice to deploy Push Installer to a Test OU that contains several workstations running all of the operating systems contained in your environment. Reboot each workstation and observe successful results before applying to the rest of the company.

IMPORTANT: We highly recommend that you also configure Computer Scripts to run asynchronously. (If you deploy Push Installer via User Login Script, then we recommend you set User Login Scripts to run asynchronously as well.)



This will allow users to log into their workstations while the installer runs silently in the background. If you deploy Push Installer without setting this parameter, then users will not be able to log on until the installer has finished installing the program.