

# PstViewer Lite User's Manual

## Table of contents

---

Introduction .....	3
System requirements .....	3
Technical support .....	4
About Us .....	4
User interface .....	6
Explorer tree .....	6
Favorites tree .....	7
Mail list .....	8
Message viewer .....	10
Main menu .....	12
Toolbar .....	15
Search messages dialog .....	15
Command line parameters .....	17
Status bar .....	19
Docking Functionality .....	20
Mail actions .....	21
Mail enumeration .....	21
Saving mail .....	22
Configuration .....	24
Settings .....	24
L10NTool.exe .....	25
File associations .....	27
User interface tweaks .....	28
Print preview .....	29
Updating and update settings .....	30
Logging .....	32
Enterprise deployment .....	33
Deployment .....	33
Registration .....	33
Command line switches .....	34

## Introduction

---

### Introduction

## What is PstViewer Lite?

PstViewer Lite is an application for viewing MSG, EML, PST, MHT, MHTML and OST files, including those containing email messages, contacts and tasks. PstViewer Lite does not require MAPI installed on computer to work with PST and OST files. You can view message headers, bodies, attachments and perform various actions on them.

### PstViewer Lite key features

- Viewing headers, bodies and attachments of messages in MSG, EML and PST formats.
- Support for reading PST and OST files without MAPI (Messaging Applications Programming Interface) installed.
- Ability to view contacts, tasks, appointments, etc.
- Viewing messages with Plain Text, RTF and HTML bodies.
- Lots of possible actions for messages, such as Reply, Forward, Print.
- Advanced search, filtering and file system navigation system.
- Highly customizable user interface with profiles support.
- Command line utility.
- Integration with Windows and default email client.

### Supported message formats

- MSG - Microsoft Outlook message file; compatible with other programs that use Microsoft's Messaging Applications Programming Interface (MAPI).
- EML - E-mail message saved by Microsoft Outlook Express, Thunderbird, Lotus, and other e-mail programs; may also contain e-mail attachments, or files sent with the message.
- PST - Personal Storage Table, file format used to store local copies of messages, calendar events, and other items within Microsoft Outlook.
- OST - Off-line Storage Table that stores e-mail messages and other data saved by the application from an Exchange server.
- MHT - MIME Hyper text, external links (such as images, Flash animations, Java applets, audio files) together with HTML code in a single file
- MHTML - MIME HTML web page archive format used to combine resources that are typically represented by external links (such as images, Flash animations, Java applets, audio files) together with HTML code in a single file

If you have any comments or suggestions for improving PstViewer Lite, we will be glad to hear your feedback. Please address your comments to [support@encryptomatic.com](mailto:support@encryptomatic.com), Subject "PstViewer Lite Feedback".

## System requirements

### System requirements

Before installing PstViewer Lite, be certain that your computer meets the following minimum software and hardware requirements.

Requirement		Description	Note
Processor		Recommended: 1 gigahertz (GHz) processor	
RAM		Recommended: 512 MB	
Available Hard Disk Space		55 Mb of available space required on installation drive	
Operating System		Microsoft Windows XP Professional SP3 Microsoft Windows Server 2003 Enterprise Edition SP2 Microsoft Windows Server 2008 Enterprise Edition SP2 Microsoft Windows Vista SP2 Microsoft Windows 7 SP1  Microsoft Windows XP Professional x64 Edition SP2 Microsoft Windows Vista x64 SP1 Microsoft Windows 7 x64 SP1 Microsoft Windows Server 2008 x64 Enterprise Edition SP2 Microsoft Windows Server R2	
Software	Windows Installer	Version 3.1 or later	Checked and updated automatically during installation
	.Net framework	Version 2.0 or later for x86 platforms Version 3.5 or later for x64 platforms	Checked and updated automatically during installation

## Technical support

### Technical support

We invite you to use the comment form on our website to submit bug reports, feature requests, and usability comments. All submitted comments are reviewed by the product manager and given serious consideration.

Visit [www.encryptomatic.com/support](http://www.encryptomatic.com/support).

## About Us

### About Us

#### Our Mission

To provide solutions that make our customers' lives more enjoyable and secure.

#### Our Vision

A safe world with the freedom to communicate freely and securely.

## About Us

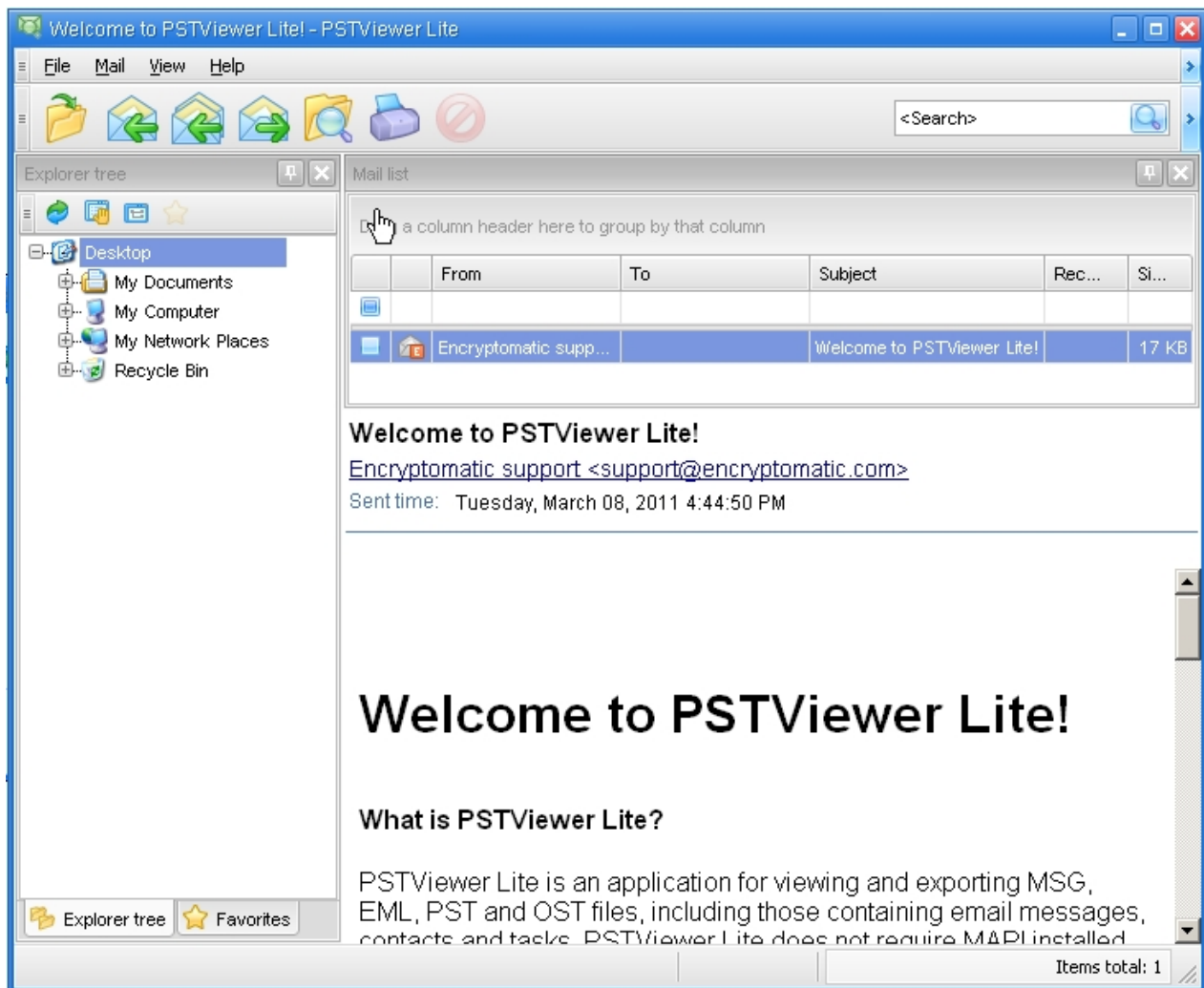
Encryptomatic LLC is a privately held limited liability company headquartered in the historic downtown district of the twin towns of Moorhead, MN, and Fargo, ND USA, in heart of the beautiful Red River Valley of the North, where we enjoy snowy winters, beautiful summers, clean air, great fishing and an abundance of seasonal outdoor activities. Our average workday commute is about ten minutes.

We were founded in 2005 by our President, Darren Leno, a former Product Manager for Microsoft Business Solutions, and Great Plains Software, Inc.

For more information, please visit <http://www.encryptomatic.com/about-us/>

## User interface

### User interface



## Explorer tree

### Explorer tree



**Explorer tree** represents a tree of folders, available on your computer and network. Upon clicking on a folder, containing messages in format, recognizable by PstViewer Lite, these messages will be enumerated and added to mail list.

**Explorer tree** lists folders, remote computers and network shared folders. Messages located in one of these places can be added to **Mail list** either by selecting item in a tree, or by right-clicking an item and selecting **Scan folder** from context menu. If **Scan folder with subfolders** item is checked, messages in subfolders will be also enumerated.

You can refresh folder tree to update display of recently renamed, created or deleted items by clicking **Refresh** button on the toolbar or by selecting it in the context menu.

**Open in explorer** context menu item and toolbar button are used for opening selected folder in Windows explorer.

**Properties** context menu item and toolbar button shows standard system properties dialog for selected folder.

**Add to favorites** toolbar button adds selected folder to active node of the favorites tree.

Docking functionality can be used to change the default position for the Explorer tree.

## Favorites tree

### Favorites tree



**Favorites tree** is a structure that allows quick access to frequently used folders and messages. Messages located in one of the folders can be added to **Mail list** either by selecting item in a tree, or by right-clicking an item and selecting **Browse** or **Browse with subfolders** from context menu.

To add folder to favorites, select it in the **Explorer tree** and click **Add to favorites** button on the toolbar. Messages can be added to favorites by dragging them from **Mail list** into the necessary location in the **Favorites tree**.

Folders can be manually created in the tree by selecting a node and clicking **New folder** in the context menu. New folder will be created as a child of the selected item.

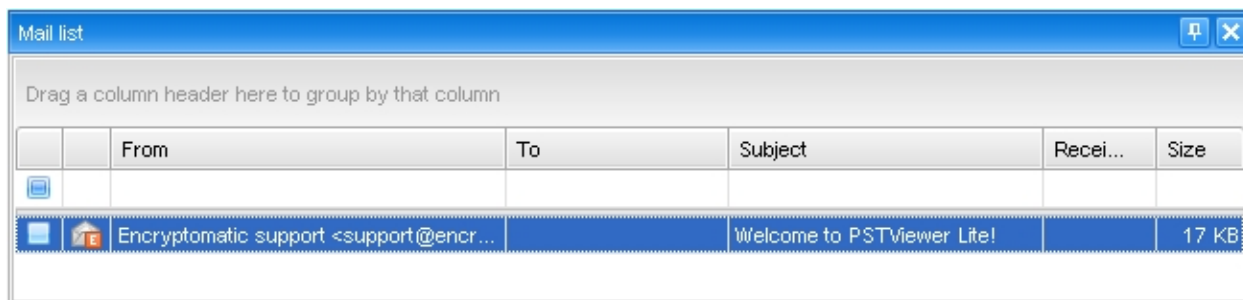
**Edit item name** context menu item can be used to change selected folder's name.

**Delete** context menu item is used for deleting folders in the tree.

Docking functionality can be used to change the default position for the Explorer tree.

## Mail list

### Mail list



#### Welcome to PSTViewer Lite!

[Encryptomatic support <support@encryptomatic.com>](mailto:support@encryptomatic.com)

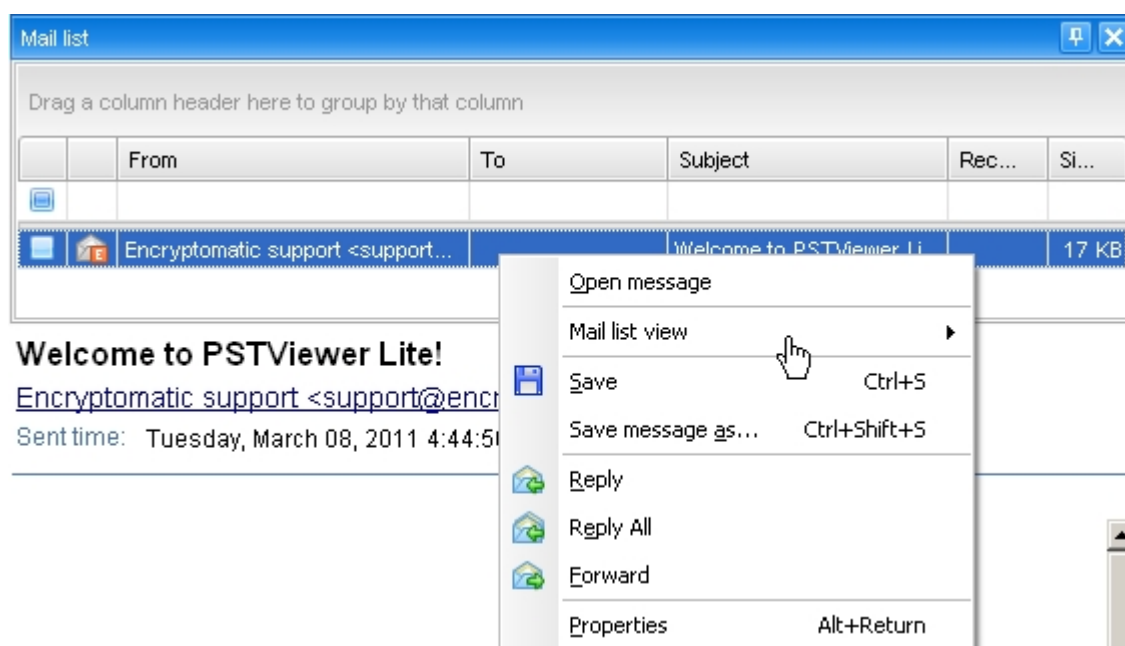
Sent time: Tuesday, March 08, 2011 4:44:50 PM

**Mail list** is a table, containing information about messages in active folder. Messages can be sorted, filtered and grouped by their attributes.

**Mail list** contains following columns: selector column, file type icon column and message attributes columns: subject, from, to, CC, BCC, delivery time, submit time, has attachments, internal path, source format, source path. User can select which columns to show in the table and which to hide.

Icons displayed for the messages in **Mail list** help to differentiate between file types of the messages and the presence of attachments.

## Context menu



Right-clicking on a line in mail list table brings context menu for selected message.

**Open message** context menu item is used to open selected message in a default email client.

**Mail list view** context menu item allows disabling of filtering and grouping capabilities of **Mail list** component in case user does not need them.

**Save** context menu item allows user to save selected message in the specified folder preserving the same file name this message already has.

**Save message as...** context menu item allows user to save selected message in the specified folder with custom file name.

**Properties** context menu item displays **Mail information** dialog which shows information about message header and file properties and allows to view message's raw transport header and MAPI properties tree.

Note: **Open message**, **Save message as...** and **Properties** menu items are unavailable when multiple messages are selected.

## Advanced Mail list tools

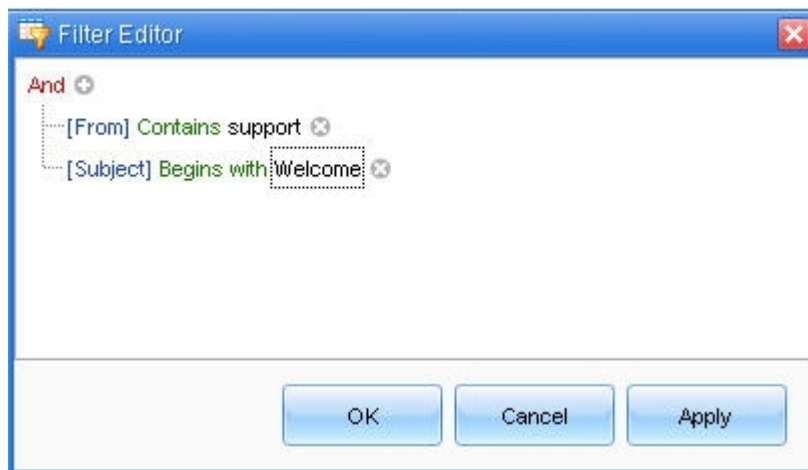
**Mail list** provides powerful tools for sorting, filtering, grouping messages and column management.

You can select which columns to display in the table by clicking **Column Chooser** in header context menu and dragging required columns from Customization window to the table. The order of the columns can also be changed using drag and drop.

The simplest way to create filter is to enter a value in one of the fields above the table. The contents of the table will be filtered according to the inputted data in the corresponding column. Resulting filter can be seen at the bottom of the table. It can be disabled and cleaned by unchecking checkbox near its description or clicking [x] button.

Another way to filter messages is clicking filter button in the column header (visible when mouse is hovering the header). It will bring a list of possible values for filter current column. This list will differ depending on column data type. For example, for subject column filtering values would include "Blank fields", "Non-blank fields", list of subjects of messages currently in the table and custom filter editor. For received time column filter would allow selecting date from Date picker control or selecting one of the predefined time-filtering options like "Earlier this year" or "Last week".

Any of the earlier created filter rules can be picked from list, that will appear after clicking on the current filter rule.



**Filter editor** dialog can be used for more advanced filtering rule editing. It can be used either to create filter from scratch or to modify already created filtering rule. **Filter editor** can be called by selecting **Filter editor...** in column header context menu or by clicking **Edit filter** button in right bottom corner of the **Mail list** if filter is already created.

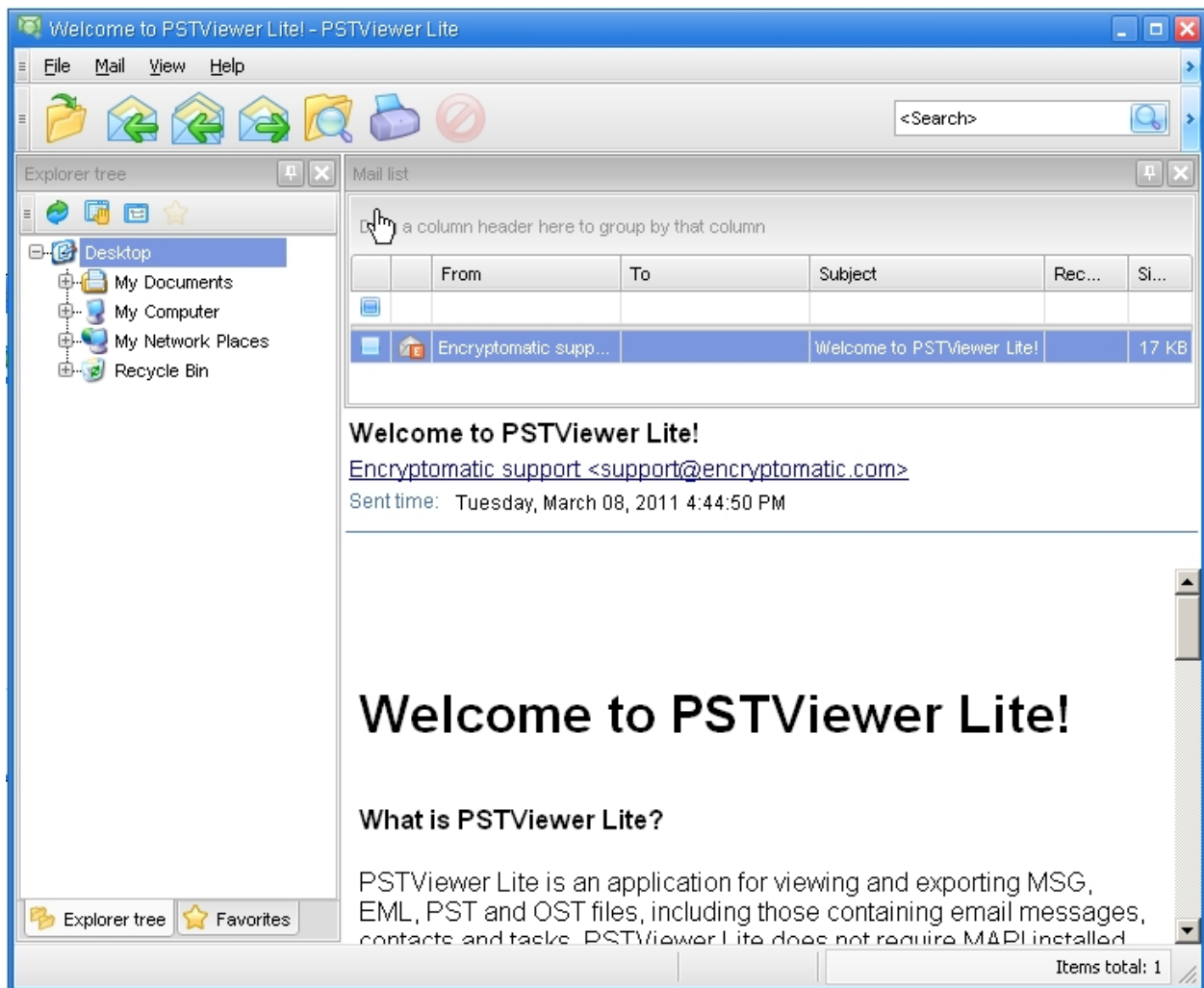
**Filter editor** creates logical constructs that are used for table filtering. These constructs are one or several logical conditions united by one of the logical operations (AND, OR, NOT AND, NOT OR). Logical conditions consist of comparisons contents of the columns with proposed value.

Message grouping can be done by the values of one or several columns in the table. To perform grouping, drag the column header into to grouping panel. It is possible to perform grouping by several columns. In this case, nesting order of the grouping columns will be determined by their relative position in grouping panel. It can be changed by dragging column headers inside of the grouping panel. To cancel grouping, drag column headers back into the table.

Docking functionality can be used to change the default position for the Explorer tree.

## Message viewer

### Message viewer



**Message viewer** displays header, body and attachments of a message, selected in **Mail list**.

**Message viewer** consists of two main parts - **Message header viewer** and **Message body viewer**.

## Header viewer

**Message header viewer** displays attributes from message header (sender, recipient, CC and BCC fields, sent and delivery times) and attachments list.

Clicking on header fields, containing email address, will result in creating a message in default email client with selected address as recipient.

Clicking on attachment items, opens them in a default application associated with corresponding file types. Right-clicking on attachments brings context menu for selected object.

**Open** attachment context menu item is used to open selected attachment in a default application (same action as clicking on item).

**Open with...** attachment context menu item brings **Open with** system dialog, that allows user to specify which application will be used to open this attachment (and optionally other files of this type).

**Save** attachment context menu item allows user to save selected attachment item in the specified folder preserving the same file name this attachment item already has.

**Save As...** attachment context menu item allows user to save selected attachment item in the specified folder with custom file name.

**Save All** attachment context menu item allows user to save all attachment items in the specified folder preserving the same file names these attachment items already have.

## Message body viewer

**Message body viewer** displays body of email message. It is displayed with all available formatting, unless **Use plain text** option is activated.

User can select message body and copy it into different application. If that application supports rich text editing (i.e. MS Office applications) source formatting of message body will be preserved.

Right-clicking on message body displays context menu.

**Select All** message body context menu item selects all text in the message body.

**Copy** message body context menu item is used to copy selected text of the message body into the clipboard.

**View source** message body context menu item opens file, containing source code of the selected message in Notepad.

Docking functionality can be used to change the default position for the Explorer tree.

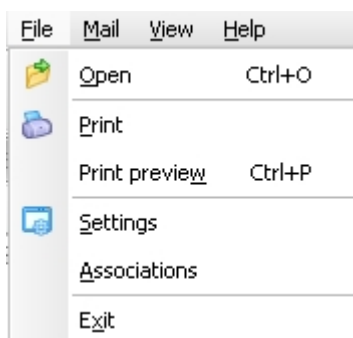
## Main menu

### Main menu

**Main menu** of PstViewer Lite consists of 4 top-level items - **File**, **Mail**, **View** and **Help**.

Please note, that main menu is completely customizable. This article describes elements in order they are grouped by default. Check [User interface tweaks](#) article for more information.

## File menu



**File** menu contains following items:

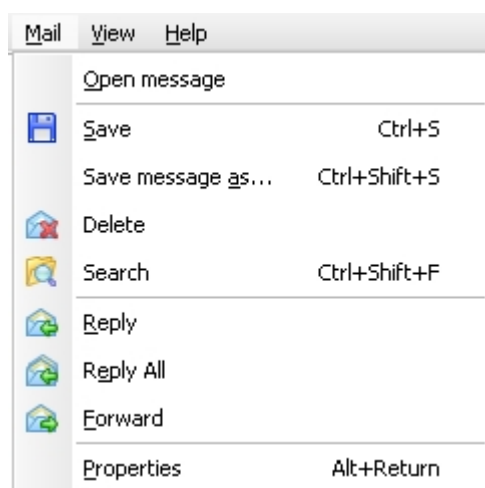
**Open** menu item is used to open message file of one of the supported formats in PstViewer Lite. Messages contained in selected file will be listed in mail list.

**Settings** menu item brings **Settings** dialog, that allows user to set font used in application and interface reactivity time. See [Settings](#) article for more details.

**Associations** menu item allows user to associate MSG, EML and PST files with PstViewer Lite. See [File associations](#) article for more details.

**Exit** menu item closes all messages opened in PstViewer Lite and quits the application.

## Mail menu



**Mail** menu contains following items:

**Open message** menu item is used to open selected message in a default email client.

**Save** menu item allows user to save selected message in the specified folder preserving the same file name this message already has.

**Save message as...** menu item allows user to save selected message in the specified folder with custom file name.

**Delete** menu item closes all messages opened in PstViewer Lite and quits the application.

**Search** menu item opens **Search** window

**Print** menu item prints selected message using default printer and default printing settings.

**Print preview** menu item opens **Preview** window that allows various settings and customizations related to the process of printing. Check [Print preview](#) article for more information.

**Reply** menu item opens default email client with a reply to a sender of a selected message.

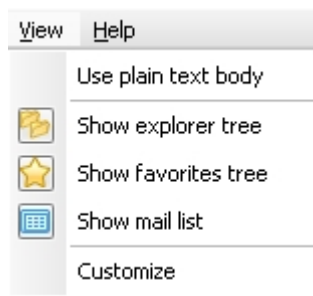
**Forward** menu item opens default email client, forwarding selected message to selected recipients.

**Properties** menu item displays **Mail information** dialog which shows information about message header and file properties and allows to view message's raw transport header and MAPI properties tree.

Note: see [Mail actions](#) section for more information about each of the actions, performed by items of **Mail** menu.

Note: only **Search** menu item is available when no messages are present in mail list. **Open message**, **Save message as...**, **Reply** and **Properties** are unavailable when selecting multiple messages.

## View menu



**View** menu contains following items:

**Use plain text body** menu item switches display of all messages in **Message viewer** to plain text body. In plain text mode, contents of message body will be displayed without formatting.

**Show explorer tree** menu item toggles visibility of **Explorer tree** panel.

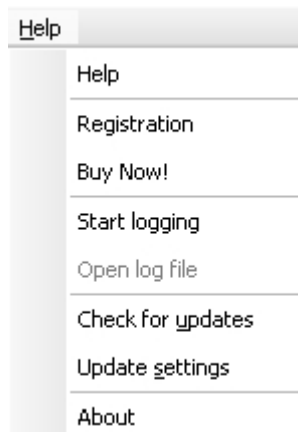
**Show favorites tree** menu item toggles visibility of **Favorites tree** panel.

**Show mail list** menu item toggles visibility of **Mail list** panel.

**Change docking to default** item allows user to set all panels to default positions.

**Customize** menu item opens **Customization** window with menu and toolbar options. See [User interface tweaks](#) article for more details.

## Help menu



**Help** menu contains following items:

**Registration** menu item opens dialog that allows to register your copy of application.

**Buy now** menu item opens a webpage where user can purchase a copy of PstViewer Lite. The page will be opened in default browser.

When **Start logging** menu item is selected, application starts logging internal information into log file. (User will be asked to specify its name and location) This file can be later sent to technical support to help resolving problematic situations. See [Logging](#) article for more information.

**Open log file** menu item opens log file, generated after selecting **Start logging** command, in default text editor.

**Check for updates** menu item checks in newer version of PstViewer Lite is available.

**Update settings** menu item opens configuration dialog for updater. See [Updating and update settings](#) for more information.

**About** menu item shows windows with information about PstViewer Lite and your license key.

## Toolbar



PstViewer Lite **Toolbar** contains buttons used for quick access to a number of mail actions and search tools.

By default, the buttons present on **Toolbar** are **Open**, **Reply**, **Reply All**, **Forward**, **Search**, **Print**, and **Stop action** buttons.

Please note, that elements of **Toolbar** are completely customizable. Check [User interface tweaks](#) article for more details.

## Mail actions items

**Open** toolbar button is used to open message file of one of the supported formats in PstViewer Lite. Messages contained in selected file will be listed in **Mail list**.

**Reply** toolbar button opens default email client with a reply to a sender of a selected message.

**Forward** toolbar button opens default email client, forwarding selected message to selected recipients.

**Reply All** toolbar button opens default email client with a reply email to all senders.

**Print** toolbar button prints selected message using default printer and default printing settings.

## Search items

**Search edit box** field can be used to make quick search in the messages opened in mail list.

**Search** button inside **Search edit box** field opens **Search messages** dialog, which offers advanced search options. See [Search messages dialog](#) topic for more information.

## Search messages dialog

## Search messages dialog

The screenshot shows the 'Search messages' dialog box. It has a title bar with a close button. The dialog is divided into two tabs: 'Search' and 'Advanced'. The 'Advanced' tab is active. It contains several input fields for searching: 'From', 'Subject', 'Header Text', 'To', 'CC', and 'Message Text'. Below these is a 'Date' section with 'Start date' and 'End date' dropdowns. At the bottom is a 'Search options' section with six checkboxes: 'Include subfolders in search', 'Search in EML files (\*.eml)', 'Search in MSG files (\*.msg)', 'Match case', 'Match whole word only', and 'Use regular expressions'. The 'Match case' checkbox is currently checked. At the very bottom are 'Search' and 'Cancel' buttons.

Search messages dialog is used to search contents of messages.

On **Search** tab user enters text in **Text to search** field. The specified text is searched for in message headers and bodies.

On **Advanced** tab it is possible to specify in which part of message to perform search. Text can be searched for in **From**, **Subject**, **CC**, **From** message properties, the whole **Header text** or **Message body**.

**Date** block is used for date-limited searches. User can specify **Start Date**, **End Date** fields or both of them to provide time limitation for searches. Please note, that value in **End Date** field should always be later than value **Start Date**.

If **Include subfolders in search** option is checked, search will be performed recursively in specified folder and its subfolders. **Include \*.eml** and **Include \*.msg** checkboxes allow limiting searches only for files of certain type.

**Match case** enforces that hits have exactly the same case as the query. If this is disabled, the search is case insensitive.

**Match whole word only** will only result in a hit if the match consists of an entire word, not if it's partial (for example (but not limited to), whitespace separated).

In **Regular Expression**, the query will be handled like a regular expression.

List of special characters:

. - any character  
\w - word character (letter or digit)  
\d - decimal digit  
\s - white-space character (space or tab)  
\* - 0 or more matches of the previous element  
+ - 1 or more matches of the previous element  
? - 0 or 1 match of the previous element  
[ ] - group of symbols, for example [ABC]+ CAB - matches, CAD - doesn't match  
\ - escape character "\" if you need dot symbol  
| - OR operator, th(e|is|at) matches "the" and "this" in "this is the day"

After **Match whole word only** and **Use regular expressions** checkboxes are set to be active, **Regular expression** will be searched among separate words of text that meets searching results. Modifiers ('^', '\$', \b) will be removed in case they were previously used.

For more detailed criteria of searching for messages, please see filtering options of **Mail list**.

## Command line parameters

### Command line parameters

Command line interface of PstViewer Lite can be accessed via PSTViewerLite.exe file, located in the same directory as PSTViewer.exe.

Usage: `PSTViewerLite.exe [options] [<file1> [<file2> ...]]`

Options description:

h, help

Show usage description.

Usage: `PSTViewerLite.exe --help`

a, associate

Associate specified file extensions with application.

Usage: `PSTViewerLite.exe --associate <format[s]>`

p, print

Print specified message to default or specified printer.

Usage: `PSTViewerLite.exe --print <file[s]>`

c, command

Load command line switches from specified file.

Usage: `PSTViewerLite.exe --command <file>`

w, nobrowse

Disable messages loading at startup.

Usage: `PSTViewerLite.exe --nobrowse`

r, runprofile

Choose profile with GUI layout.

Usage: `PSTViewerLite.exe --runprofile <profile name>`

l, log

Turn on the log file.

Usage: `PSTViewerLite.exe --log <file>`

i, printer

Specify default printer.

Usage: `PSTViewerLite.exe --printer <name>`

k, key

Register the application with specified serial key for current user. Key will be applied during next start of application.

Usage: `PSTViewerLite.exe --key <serial key>`

delkey

Erase serial key for current user.

Usage: `PSTViewerLite.exe --delkey`

g, gui or GUIFLAGS

Configure visibility of GUI elements.

Usage:

`PSTViewerLite.exe --gui <element1,element2[,...]>`

or

`PSTViewerLite.Setup-4.x.x.xxxx.exe GUIFLAGS="<element1,element2[,...]>`

PSTViewer GUI elements:

- MLP - Mail list panel
- FEP - File explorer panel
- FTP - Favorites tree panel
- TBR - Toolbar
- MMP - Main menu panel
- SCH - Search elements
- CMZ - Customize GUI elements dialog
- NUP - Remove 'Check for updates' and 'Update settings' options from the Help menu.

Toolbar buttons:

- OPF - Open file
- REP - Reply message
- FWD - Forward messages
- PRN - Print messages

UPDATE\_POLICY

Choose update policy. It can be found in Help menu.

Usage: `UPDATE_POLICY="Never" | "Ask" | "Auto"`

Options for update policy:

- Never - Set 'Do not check for updates automatically' options in 'Updates Options' dialog;
- Ask - Set 'Check and prompt me to download and install the updates' options in 'Updates Options'

- dialog. This option is set by default;
- Auto - Set 'Check and automatically download and install' options in 'Updates Options' dialog.

## GUILANG

Set the language for PstViewer Lite interface.

Usage: `GUILANG="<language>"`

The list of languages that PstViewer Lite supports:

- 1 Chinese.zh-CN
- 2 Chinese.zh-TW
- 3 English.en-US
- 4 French.fr-FR
- 5 German.de-DE
- 6 Italian.it-IT
- 7 Polish.pl-PL
- 8 Portuguese.pt-PT
- 9 Russian.ru-RU
- 10 Spanish.es-ES

## /exelang

Set the language for installation process.

Usage: `/exelang <LangId>`

The table with different <LangId> can be found here:

<http://msdn.microsoft.com/en-us/library/bb165625%28VS.80%29.asp>

Example (to install French version):

`PSTViewerLite.Setup.exe /exelang 1036`

## <file\_extension>\_ASSOC

Associate PSTViewer with msg, eml, pst or/and ost files.

Usage:

- `EML_ASSOC="1"` - associate PstViewer Lite with eml files;
- `MSG_ASSOC="1"` - associate PstViewer Lite with msg files;
- `PST_ASSOC="1"` - associate PstViewer Lite with pst files;
- `OST_ASSOC="1"` - associate PstViewer Lite with ost files;
- `ALL_ASSOC=1` - associate PstViewer Lite with msg, eml, pst and ost files.

Usage:

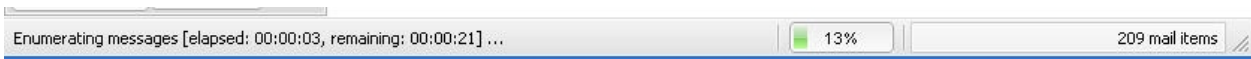
```
msiexec /i PSTViewerLite.Setup-4.x.x.xxxx.msi /qn PIDKEY="xxxxxxxx-xxxx-xxxx-xxxx-xxxxxxxx" GUILANG="French.fr-FR" GUIFLAGS="FWD,REP,FTP" ALL_ASSOC=1
```

or

```
PSTViewerLite.Setup-4.x.x.xxxx.exe /qn PST_ASSOC="1" MSG_ASSOC="1" GUIFLAGS="FWD,REP,FTP,NUP"
```

## Status bar

### Status bar



**Status bar** shows description of hovered user interface elements, name and progress of current action, number of messages in active folder and other information.

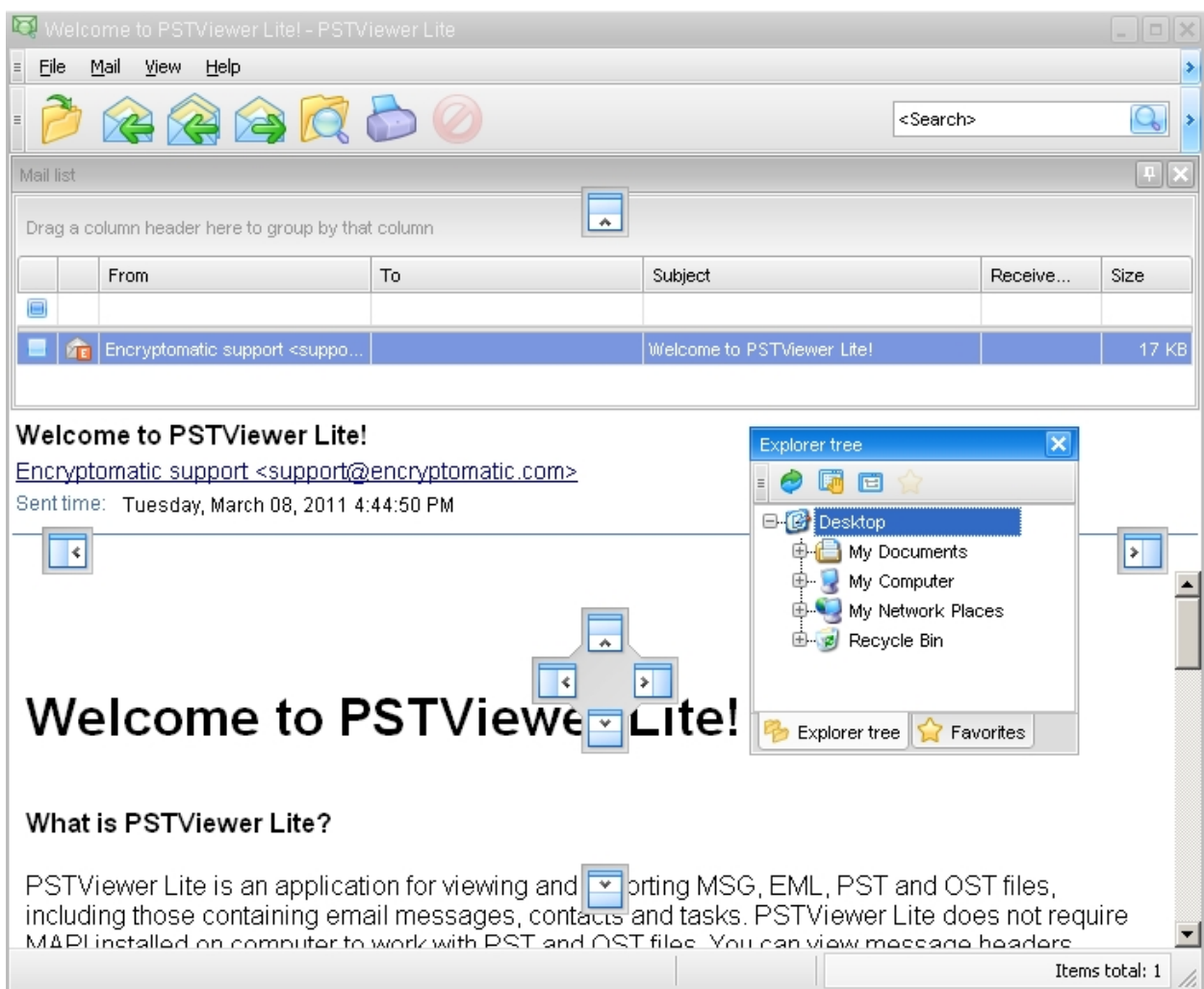
## Docking Functionality

### Docking Functionality

Docking functionality helps to set PSTViewer in convenient for user way by changing the default position of the panels.

Basically, docking operations use drag-and-drop. Dock panels can be docked to the top, left, bottom or right edge of a form (or user control).

Usage: Start dragging and you will see exactly where the dragged panel can be docked. Small markers will indicate sides where the panel is allowed to be docked (see the image below).



View menu contains 'Change docking to default' item that allows user to set all panels to default positions.

## Mail actions

---

### Mail actions

Mail action is an operation that can be performed on messages or message groups. Some actions can be performed on single messages only and some - on several messages.

Any actions that take time to perform can be stopped by pressing **Stop** button on the **Toolbar**.

Mail actions include:

- Opening
- Replying
- Forwarding
- Printing
- Saving
- Deleting
- Enumerating messages in folders

**Opening.** Opens message in default email client action.

**Replying.** An action of replying consists of creating a message following selected message in a default email client. Sender of original message will be recipient of the new one.

**Forwarding.** An action of forwarding consists of creating a message in a default email client, containing the copy of the original message to allow to forward it to different recipient.

**Printing.** An action of printing messages. Printing scale, paper size, background color, watermarks and other options can be customized in **Print preview** window. Check [Print preview](#) article for more information.

**Saving.** An action of saving a copy of selected message in specified folder. File name may be taken from source message or specified directly.

**Deleting.** An action of deleting of selected messages. Messages inside containers (PST files) cannot be deleted.

**Enumerating.** An action of retrieving a list of messages located in specified folder and (optionally) its subfolders. See [Mail enumerating](#) article for more details.

## Mail enumeration

### Mail enumeration

Mail enumeration is an action of retrieving a list of messages located in specified folder and (optionally) its subfolders. A result of enumeration is a **Mail list** filled with information about messages in current location.

Enumeration is automatically triggered when user selects a folder in **Explorer tree** or **Favorites trees**. It can be manually triggered by selecting **Refresh** in **Explorer tree** context menu or **Browse** or **Browse with subfolders** in **Favorites tree** context menu. In case of "with subfolders" option was selected, enumeration will be performed in specified folder and recursively in all of its subfolders. Automatically triggered enumeration will be performed recursively if **Switch to scan with subfolders** in Explorer tree context menu is checked.

The length of the process of enumeration depends on the number of messages in the folder. If the process takes a noticeable amount of time, its progress will be displayed in status bar. The displayed information include progress bar with status of the process, estimated completion time and estimated number of messages found. Please note, that during the enumeration of PST files, we cannot precisely pinpoint the amount of messages inside, until the reading of file is complete. So, estimated amount of messages can differ from exact number after the reading is complete.

## Saving mail

### Saving mail

Mail saving is an action, which consists of saving selected message to one of file formats according to specified settings.

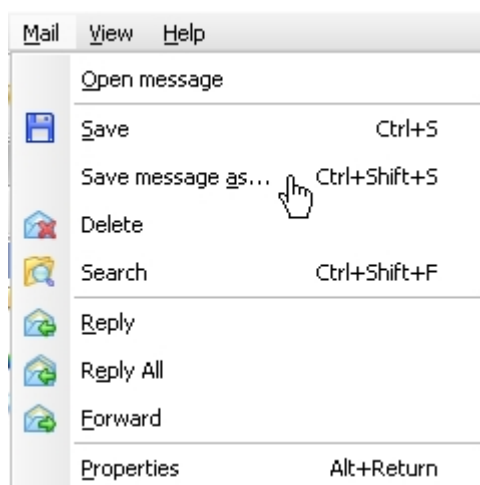
### Supported formats

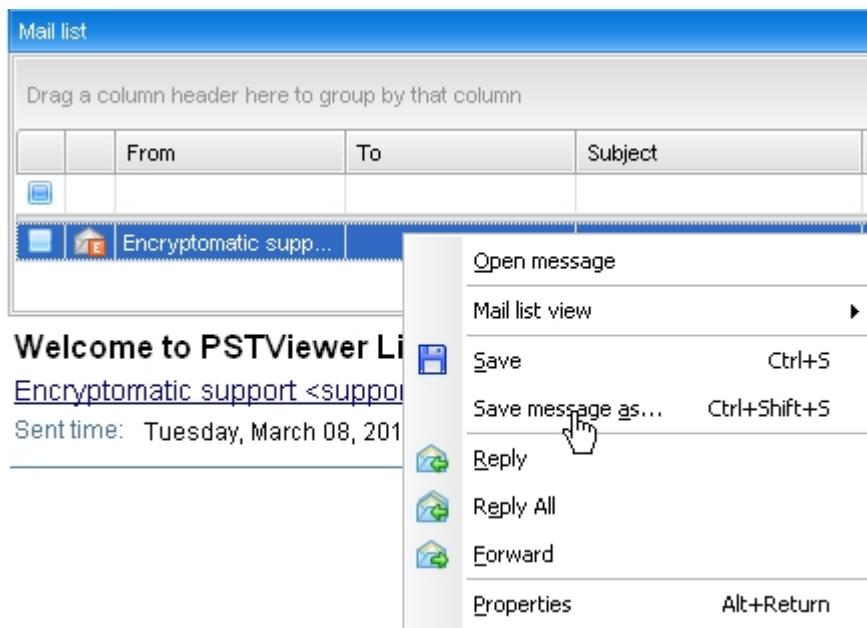
There are following formats to save your mail in available:

- PDF - Portable Document Format, created by Adobe Systems for document exchange. PDF is used for representing two-dimensional documents in a manner independent of the application software, hardware, and operating system.
- HTML - Hypertext markup language file; can be opened by any web browser, such as Microsoft Internet Explorer or Mozilla Firefox.
- MHT - Web archive MHTML file; supported by Microsoft Word, Internet Explorer or Opera.
- TXT - Plain text file format; can be opened and edited by any text editor.
- PNG - Portable Network Graphics, a bitmap image format that employs lossless data compression.
- JPG - A commonly used method of compression for photographic images.
- GIF - A bitmap image file format.
- TIFF - A file format for storing images, including photographs and line art.
- BMP - A bitmap image file format from Microsoft Windows

### Mail saving menu

You can save mail using main menu, or just with right-clicking on the email you need to save



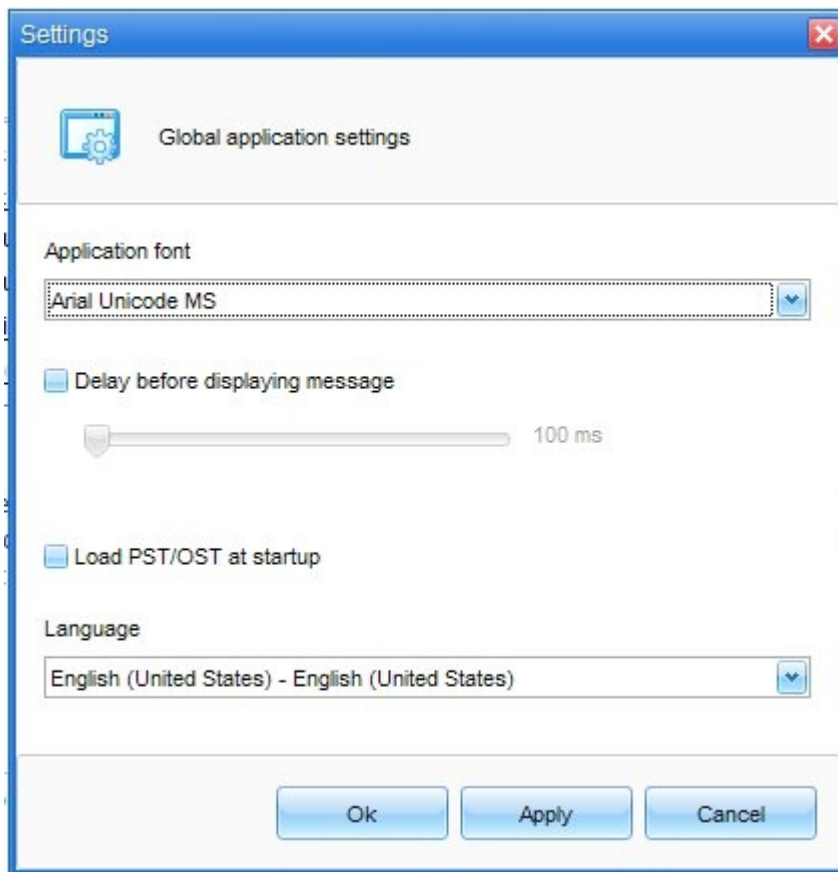


## Configuration

### Configuration

## Settings

### Settings



**Settings** dialog contains global application settings. It can be called from **Settings** item in the **File** menu.

Application font drop-down list can be used to specify the font that will be used in application as an interface font. It is vital, that an Unicode font is selected for correct display contents of messages with non-english symbols. Arial Unicode MS is set as a default font.

**Delay before displaying message** options are used to set up optimal response time. This is the delay time after the message was loaded after its selection in **Mail list** and before appearance of its contents in **Message viewer**. Lower values will cause message to appear more quickly, higher values will make navigation through Mail list more smooth.

Possible values - disable, or from 100 to 2000 ms. Default value - 400 ms.

**Language** drop-down list can be used to change GUI language for PstViewer Lite. The current version supports the next languages:

- English;
- French;
- German;

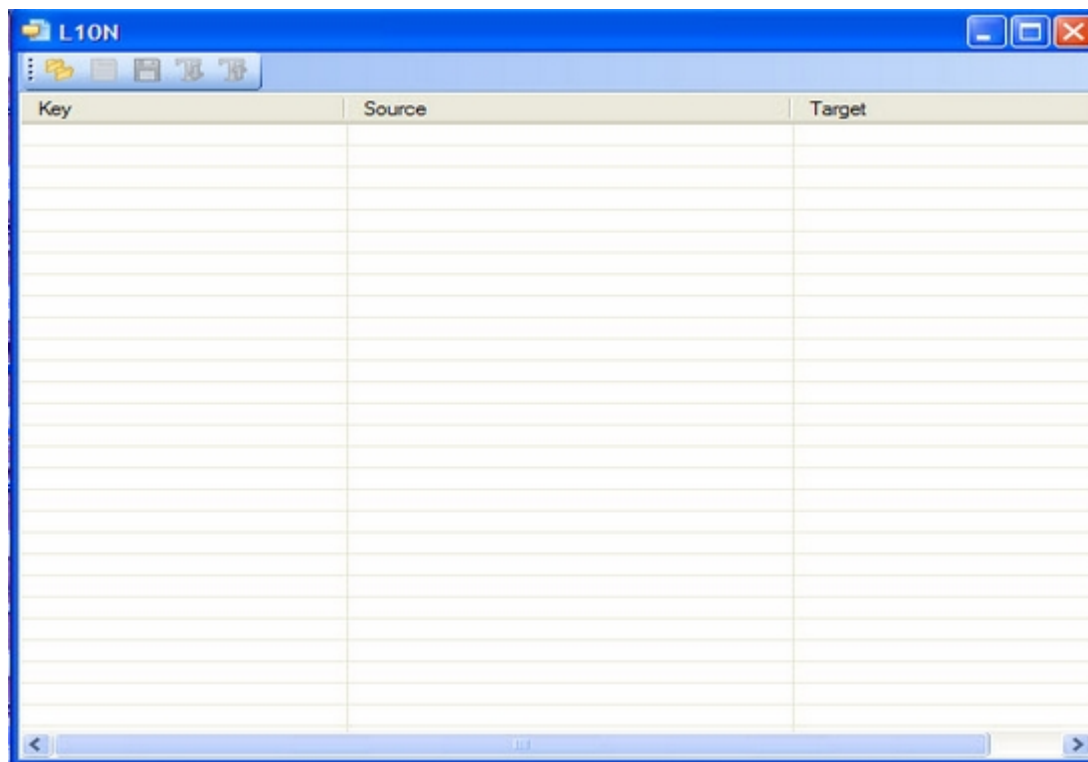
- Italian;
- Polish;
- Portuguese;
- Russian;
- Spanish;
- Chinese Traditional;
- Chinese Simplified.
- Arabic;
- Filipino;
- Hindi;

If you do not see a specific language, you can localize PstViewer Lite by your own using [L10NTool.exe](#)

## L10NTool.exe

### L10NTool.exe

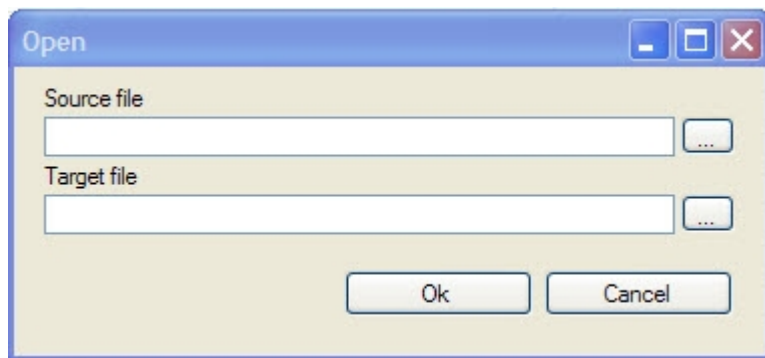
We provide L10NTool.exe with PstViewer Lite installation (you can find it in the Languages folder). After running this tool you will get the next window:



#### Toolbar

#### Open button

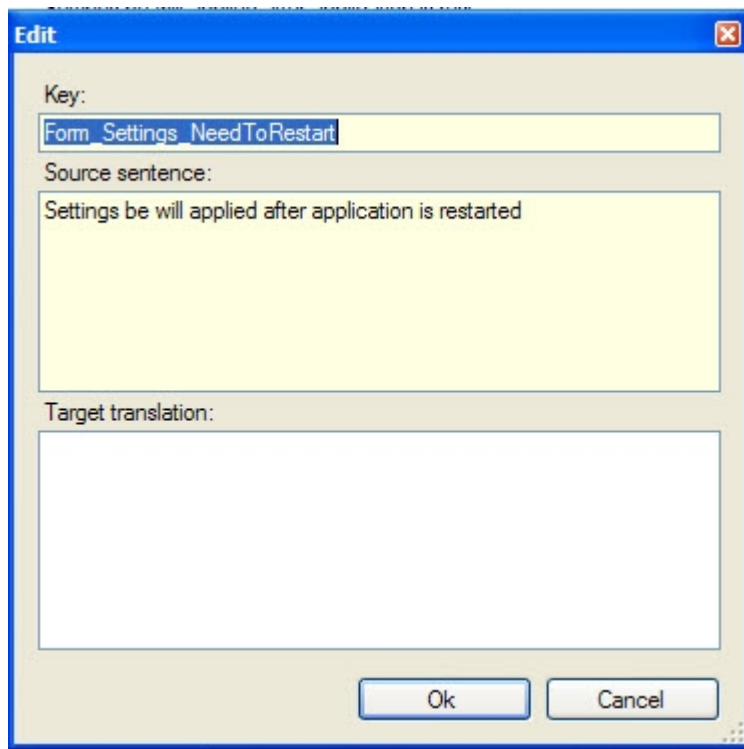
Open button will display the next window:



Choose Source file (the file that should be localized) and Target file (the file that will contain localized information). Click Ok button. Now you can easily find the strings that are not localized (they are marked as yellow strings):

Key	Source	Target
Action_DeleteMail_Ask	Are you sure that you want to delete {0} files?	Plików do usunięcia: {0}. Czy na pewn...
Action_DeleteMail_Description		
Action_DeleteMail_Name	Deleting...	Trwa usuwanie...
Action_DeleteMail_NotSingle	Specified message is located in a mail contain...	Wybrana wiadomość znajduje się w pli...
Action_EnumFiles_Description		
Action_EnumFiles_Directories	Enumerating directories...	Sprawdzanie liczby katalogów...
Action_EnumFiles_Name	Enumerating files...	Sprawdzanie liczby plików...
Action_EnumFiles_UnableEnum	Unable to enumerate files	Nie udało się sprawdzić liczby plików
Action_EnumMails_Description		
Action_EnumMails_LoadErr	Error during reading one of messages:	Błąd podczas odczytu jednej z wiado...
Action_EnumMails_Name	Enumerating messages ...	Sprawdzanie liczby wiadomości...
Action_EnumMails_Progress	Enumerating messages	Sprawdzanie liczby wiadomości
Action_EnumMails_ProgressElap...	elapsed	upłynęło
Action_EnumMails_ProgressRem...	remaining	pozostało
Action_ExportMails_Description	Export messages	Eksportowanie wiadomości
Action_ExportMails_Name	Export	Eksport
Action_ExportMails_Only50	Application now works in trial mode. In trial mo...	Program działa w trybie testowym. W t...
Action_ExportMails_Progress	Export in progress, please wait.	
Action_Forward_Description	Forward	Przełącz dalej
Action_Forward_Error	Unable to send mail.	
Action_Forward_MoreThen50	You cannot add more than 50 attachments to...	Nie można dodać więcej niż 50 załącz...
Action_Forward_Name	Forward	Przełącz dalej
Action_Forward_Description	Forward	Przełącz dalej

To edit string you can double click on it:



### Save and Save as...

Allow to save created document.

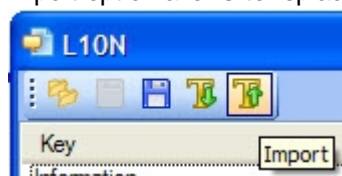
### Export untranslated

You can export all untranslated strings to one file. To do it click Export untranslated button:



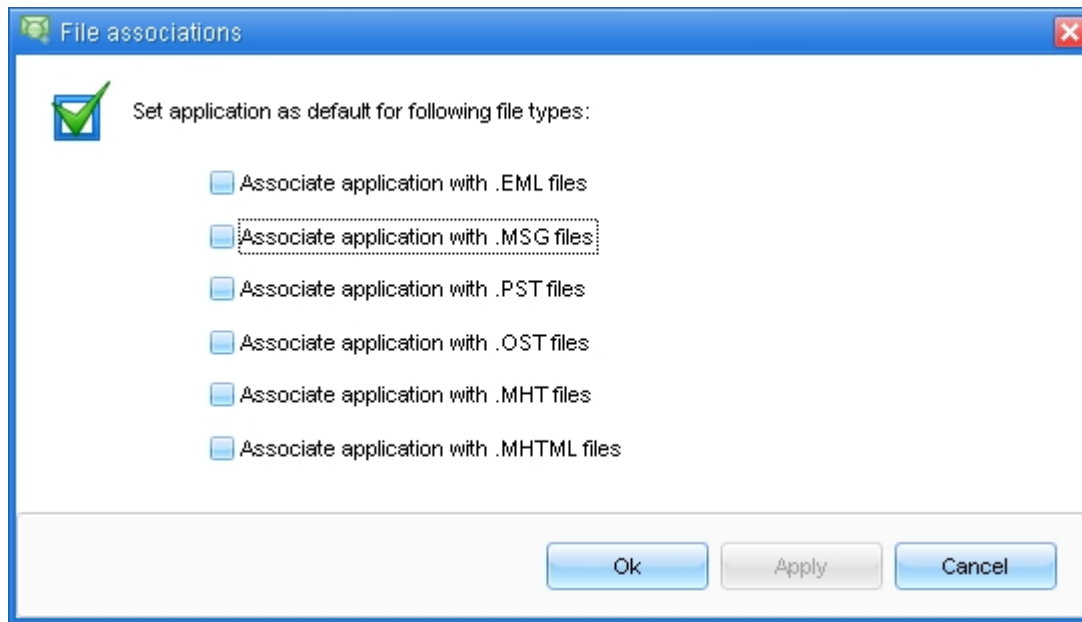
### Import

Import option allows to replace the strings in the opened file to strings in a new file:



## File associations

### File associations



**File associations** dialog contains global application settings. It can be called from **Associations** item in the **File** menu.

PstViewer Lite can be set as a default application to open MSG, EML, PST, MHT, MHTML and OST files. File associations can be set using standard Windows file association window.

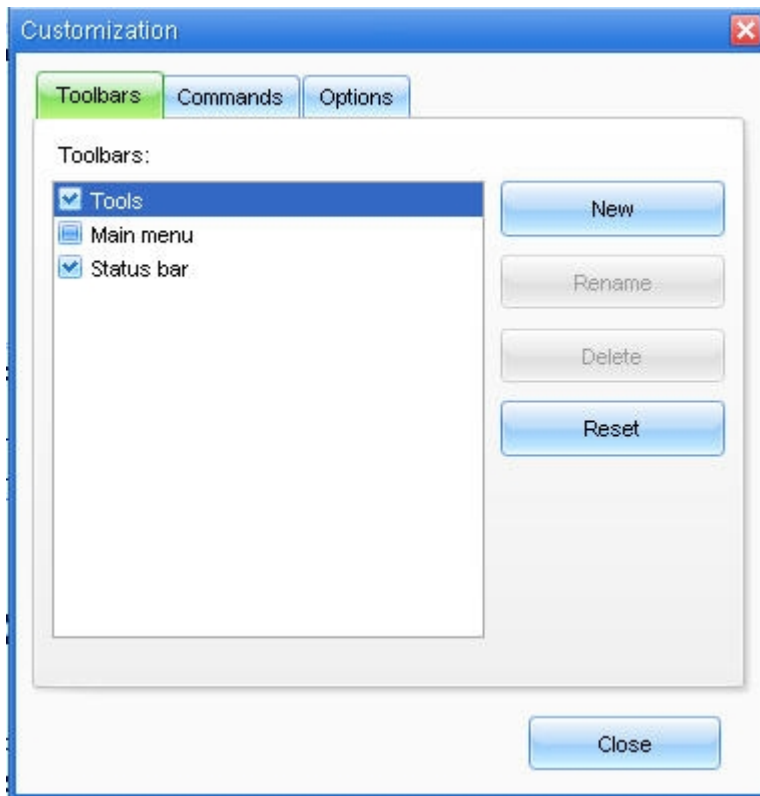
Please note, that it is impossible to un-associate PstViewer Lite with file types directly. To do this, you should associate file types in question with different application using Windows file association interface.

## User interface tweaks

### User interface tweaks

PstViewer Lite offers a highly customizable interface system. It supports setting up the locations and contents of interface elements and saving these customizations into profiles.

### Interface customizations



Toolbars position in the application window can also be changed by dragging them. To change visibility of toolbars, right click on a toolbar to call context menu and select toolbars you wish to show or hide.

To open **Customization** window, select **Customize** item in toolbar context menu. When this window is opened, the order of menu and toolbar items can be changed using drag-and-drop.

**Toolbars** tab contains tools for creating, changing, deleting and resetting toolbars and menu. New items can be added to menu and toolbar by dragging them from **Commands** tab to their preferred location on panels.

## Interface profiles

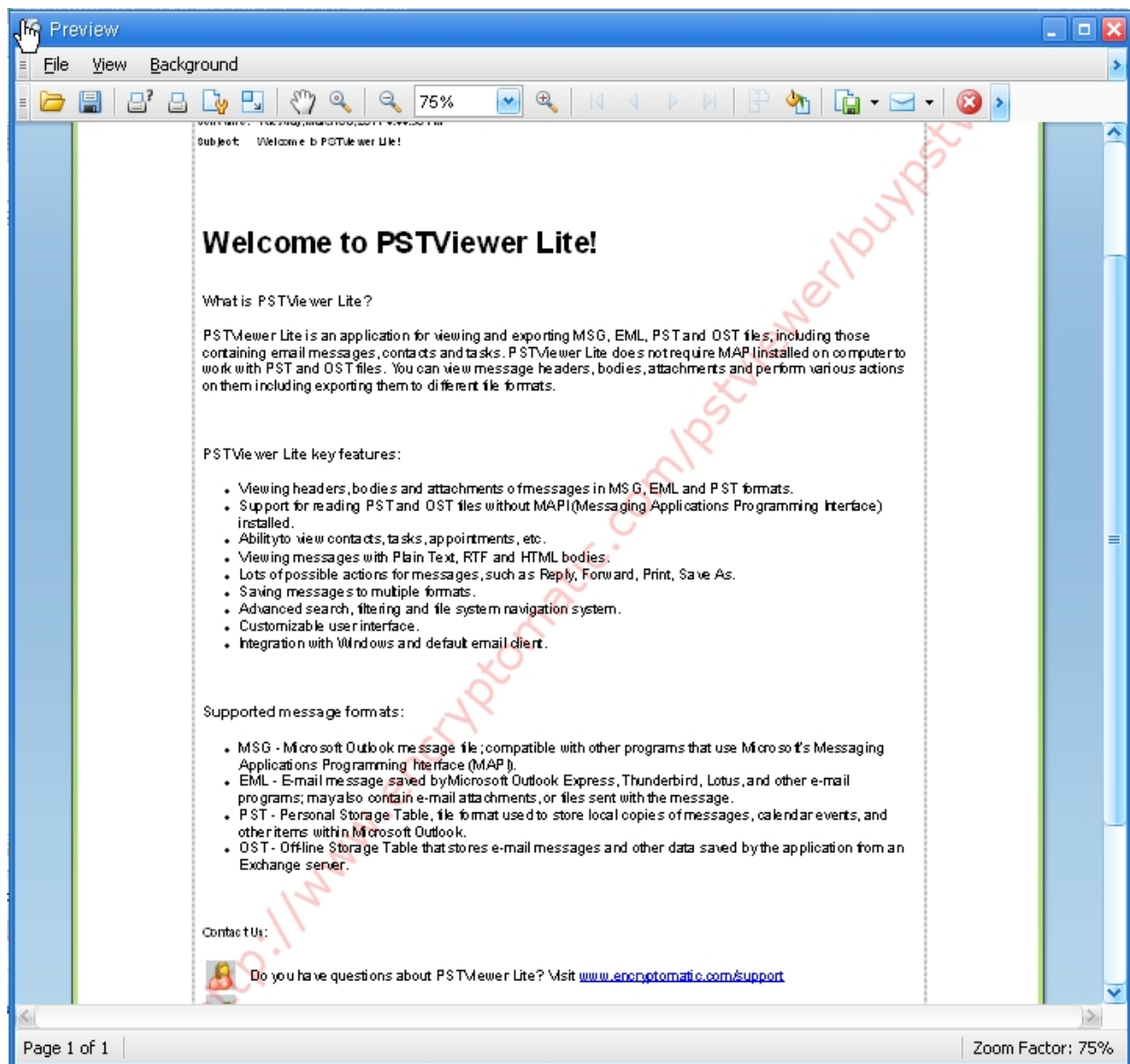
PstViewer Lite supports working with different graphical user interface profiles. GUI profile is a saved configuration of GUI elements positions, sizes, menu and toolbar items.

To launch PstViewer Lite with custom user profile, use `PSTViewerLite.exe --runprofile <profile_name>` command line parameter. All changes made to specified interface profile will be saved.

If application was launched without custom interface profile, all GUI changes and modifications will be applied to default profile.

## Print preview

### Print preview



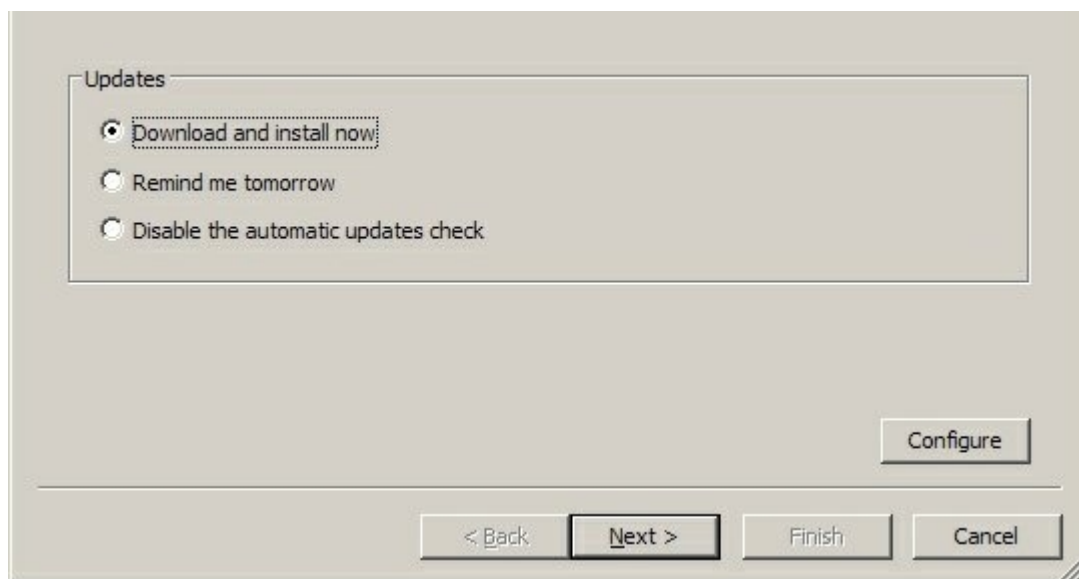
**Print preview** window provides advanced configuration options for printing files. It can be called from **Print preview** item in the **Mail** menu.

Features:

- Printer selection and preferences
- Printing preview, single- and multi-page. Custom zoom level.
- Saving and loading documents in prnx format
- Margins adjustments
- Setting of background colors
- Adding text or picture as watermark
- Saving document in picture file (BMP, JPG, GIF, PNG, TIFF, WMF, EMF)
- Emailing document in a picture file

## Updating and update settings

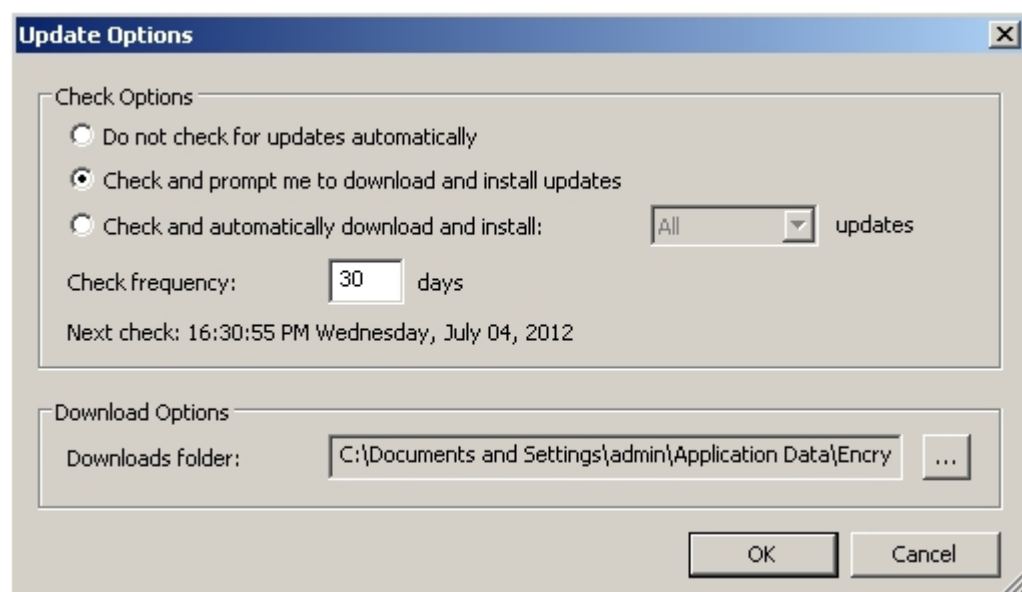
### Updating and update settings



PstViewer Lite has built-in system for checking if newer versions of application is available. User can check for updates either manually, or allow application to do checks for newer versions periodically.

Manual update checks can be performed by pressing **Check for updates** item in **Help** menu. Parameters of automatic updating systems can be set by selecting **Update settings Help** menu item.

## Update options dialog



**Check frequency** group is used to set how frequently the check for updates is performed and if the updates will be installed automatically.

If **Do not check for updates automatically** option is selected, PstViewer Lite will never check for newer versions automatically.

If **Check and prompt me to download and install the updates** option is selected, application will check for newer version with frequency, specified in **Check frequency** field. If the updates are found, user will be asked if he wants to download and install these updates.

If **Check and automatically download and install** option is selected, PstViewer Lite will check for

newer version with frequency, specified in **Check frequency** field. If the updates are found, they will be downloaded and installed automatically (either all updates or critical only - as specified by user).

**Downloads folders** field sets the folder, in which temporary update files will be downloaded.

You can also set up update options while installation. Check [Command line parameters](#) article for more information.

## Logging

### Logging

Logging is recording of internal information into the text file. This file can be later sent to technical support to help resolving problematic situations or report bugs with PstViewer Lite.

Log contains basic information about user's operation system and internal information about application's settings and performed actions. No personal information is collected.

Logging can be started by selecting **Start logging** item in **Help** menu. User will be asked to specify name and location of the log file. After this, PSTViewer Lite will log its activity until the application will be closed.

Generated log file can be opened by selecting **Open log file** item in **Help** menu. The log file will be opened in default text editor.

## Enterprise deployment

---

### Enterprise deployment

## Deployment

### Deployment

PstViewer Lite installation is distributed as .EXE executable and as .MSI Windows Installer Package.

Executable version of installation is able to check if required components for PVP deployment are installed in the system. If these dependencies are not installed, executable version will download and install them.

Installer Package version of installation is unable to download and install dependencies, but can be used in remote software deployment systems. Please make sure, your PC meets minimum software requirements before installing this version.

## Registration

### Registration

This topic covers the aspects of PstViewer Lite registration.

There are two different versions of PstViewer Lite available - with and without copy protection system:

- Protected version of PstViewer Lite require registration key to unlock full functionality. The software can be evaluated with certain limitations without registering. The methods of registering application are described below.
- Unprotected versions of PstViewer Lite have NoLP as part of their installation file names. They can be installed and used with full functionality for unlimited period of time without requiring input of the registration key.

All information below describes version of PstViewer Lite with copy protection.

#### **Trial limitations**

Without key PstViewer Lite has 15 days of free trial. After inputting a valid key this limitation is lifted.

#### **Activation statuses**

The activation status of current copy of PstViewer Lite can be seen in Help - Registration. These statuses include:

- Active trial version. User may evaluate PstViewer Lite with trial limitations.
- Expired trial version. The trial period has expired, user must input registration key to continue using PstViewer Lite.
- Fully functional version. A valid registration key has been inputted. User may use PstViewer Lite without any limitations.

## Methods of registration

### 1. Registration via command line.

You can register PstViewer Lite via command line interface that can be accessed via PSTViewerLite.exe file.

The next options are available for registration:

k, key

Register the application with specified serial key for current user. Key will be applied during next start of application.

Usage: `PSTViewerLite.exe --key <serial key>`

delkey

Erase serial key for current user.

Usage: `PSTViewerLite.exe --delkey`

### 2. Registration via Registration window.

PstViewer Lite can be registered manually via Help - Registration window. Write the key in Serial key field and press Ok button. The registration procedure will be performed and if the key has been validated successfully, the activation will be completed. You may require the internet connection to perform the activation depending on your key type.

### 3. Registration while installation process.

You can register PstViewer Lite for all users while installation process. The next option is available for such registration:

`PIDKEY="<license_key>"`

Usage:

`PSTViewerLite.Setup-4.x.x.xxxx.exe PIDKEY="xxxxxxxx-xxxx-xxxx-xxxx-xxxxxxxx"`

or

`msiexec /i PSTViewerLite.Setup-4.x.x.xxxx.msi /qn PIDKEY="xxxxxxxx-xxxx-xxxx-xxxx-xxxxxxxx"`

where xxxxxxxx-xxxx-xxxx-xxxx-xxxxxxxx is your license key.

## Command line switches

### Command line switches

PstViewer Lite installation files support all msiexec command-line options. For importing profiles via command line, please see Profile deployment topic.

msiexec /Option <Required Parameter> [Optional Parameter]

#### Install Options

</package | /i> <Product.msi>

Installs or configures a product

/a <Product.msi>

Administrative install - Installs a product on the network

/j<u|m> <Product.msi> [/t <Transform List>] [/g <Language ID>]

Advertises a product - m to all users, u to current user

</uninstall | /x> <Product.msi | ProductCode>

Uninstalls the product

#### Display Options

/quiet

Quiet mode, no user interaction

/passive

Unattended mode - progress bar only

/q[n|b|r|f]

Sets user interface level

n - No UI

b - Basic UI

r - Reduced UI

f - Full UI (default)

/help

Help information

#### Restart Options

/norestart

Do not restart after the installation is complete

/promptrestart

Prompts the user for restart if necessary

/forcerestart

Always restart the computer after installation

#### Logging Options

/[i|w|e|a|r|u|c|m|o|p|v|x|+|!]\* <LogFile>

- i - Status messages
- w - Nonfatal warnings
- e - All error messages
- a - Start up of actions
- r - Action-specific records
- u - User requests
- c - Initial UI parameters
- m - Out-of-memory or fatal exit information
- o - Out-of-disk-space messages
- p - Terminal properties
- v - Verbose output
- x - Extra debugging information
- + - Append to existing log file
- ! - Flush each line to the log
- \* - Log all information, except for v and x options

/log <LogFile>

Equivalent of /!\* <LogFile>

#### Update Options

/update <Update1.msp>[;Update2.msp]

Applies update(s)

/uninstall <PatchCodeGuid>[;Update2.msp] /package <Product.msi | ProductCode>

Remove update(s) for a product

#### Repair Options

/f[p|e|c|m|s|o|d|a|u|v] <Product.msi | ProductCode>

Repairs a product

p - only if file is missing

- o - if file is missing or an older version is installed (default)
- e - if file is missing or an equal or older version is installed
- d - if file is missing or a different version is installed
- c - if file is missing or checksum does not match the calculated value
- a - forces all files to be reinstalled
- u - all required user-specific registry entries (default)
- m - all required computer-specific registry entries (default)
- s - all existing shortcuts (default)
- v - runs from source and recaches local package

#### Setting Public Properties

[PROPERTY=PropertyValue]

Consult the Windows ® Installer SDK for additional documentation on the command line syntax.