

Microsoft .NET Framework

Update your computer with the latest version of .NET Framework.

Download the latest version here:

<http://www.microsoft.com/downloads/details.aspx?FamilyID=0856EACB-4362-4B0D-8EDD-AAB15C5E04F5&displaylang=en>

Installation For Windows Vista

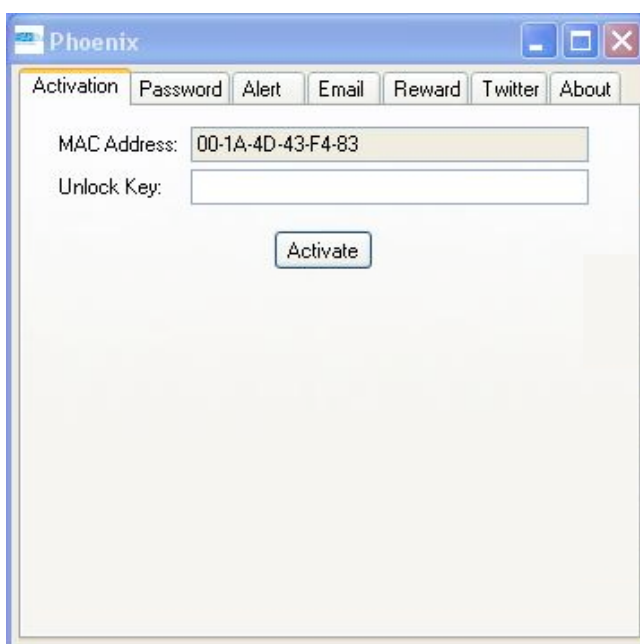
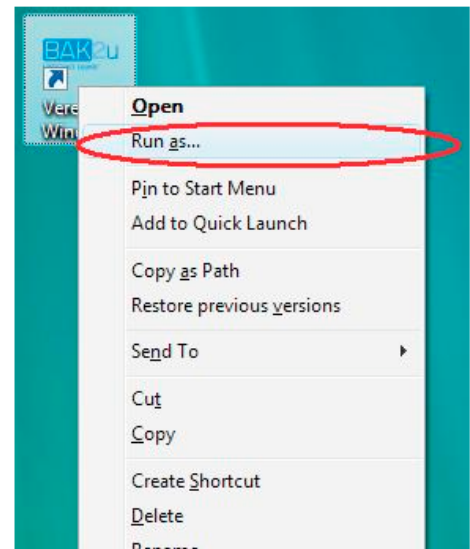
Double click the file '**Phoenix for Vista.msi**' and install it. Note that you need to have administrative privileges to install Phoenix.

NOTE: **DO NOT** restart the computer before configuring Phoenix (especially password)

Instruction Guide: Configuring Phoenix for Vista

If your Operating System is any version of Microsoft Windows Vista, then press the Shift key and at the same time right-mouse click on the icon 'Phoenix' on the desktop. A popup menu will appear.

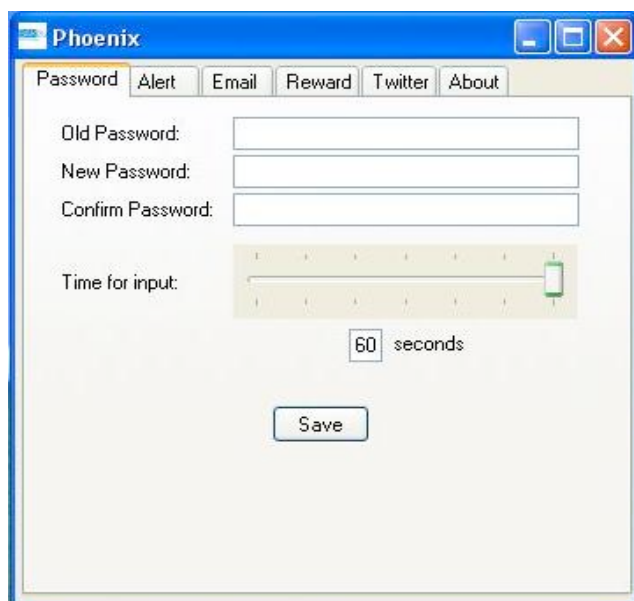
Select 'Run as' as shown in the screenshot. Then just 'Allow' and continue as per normal. **Enter your own password in the pop up window.**



Registration

Go to <http://www.bak2u.com/activate> (Windows OS- windows Laptop and desktop) and enter the necessary details in the form together with the **Activation Pin** (refer to vendor for more details).

Enter the given **Unlock Key** into the 'Unlock Key' field on the program at your desktop. Press '**Activate**' to register the program.



Password

Select the tab '**Password**' to change your password to access the program.

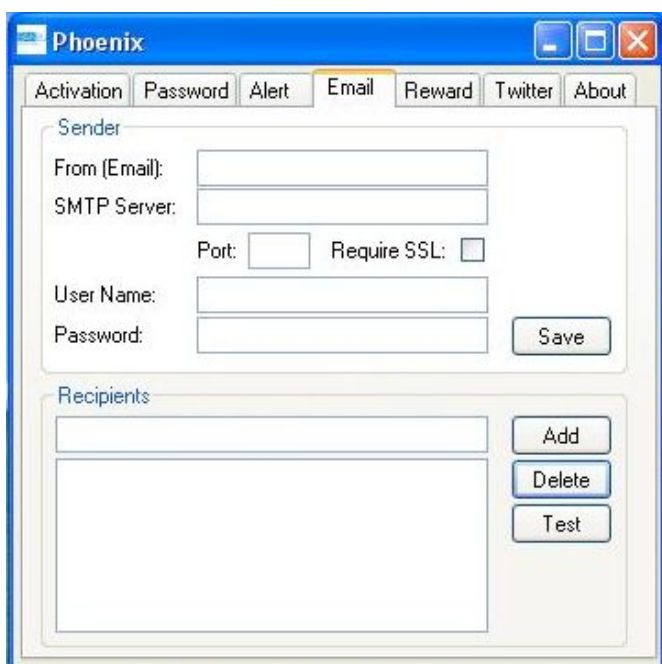
Use the bar to select the countdown timing. e.g. 60 seconds.

Alert

Select the tab '**Alert**' to customize your alert message.

E.g. Alert! Ken's Packard Bell laptop Model EasyNote BG 46-023 has been stolen!

Set the number of times the alert message(s) is sent out within the number of minutes.



Email

Setup email addresses so that phoenix can send Email alerts when laptop is stolen.

Recipients

Add email addresses of people whom you want to alert via email (spouse, parents etc.)

Email settings

You may like to verify the settings with your Internet service provider if you are unsure. It is recommended that you set up a Gmail account for Phoenix, as it is free, fast and reliable. Set up a new Gmail account at <http://mail.google.com>. Once you have set up an account, you can configure Phoenix email settings by using the following settings.

From Email: your Gmail address (e.g.: me@gmail.com)

SMTP server: smtp.gmail.com

Port: 587 or 465

Require SSL: YES

User name: Your user name with @gmail.com (e.g.: me@gmail.com)

Password: Gmail Password

More information here: <http://mail.google.com/support/bin/answer.py?hl=en&answer=13287>

Alarm


If the user fails to enter the correct password within the pre-defined timing, hidden alerts will be sent out IP addresses, MAC Hardware Address and even details of nearby wireless networks out immediately!

The following screen will then be displayed on the laptop/desktop.

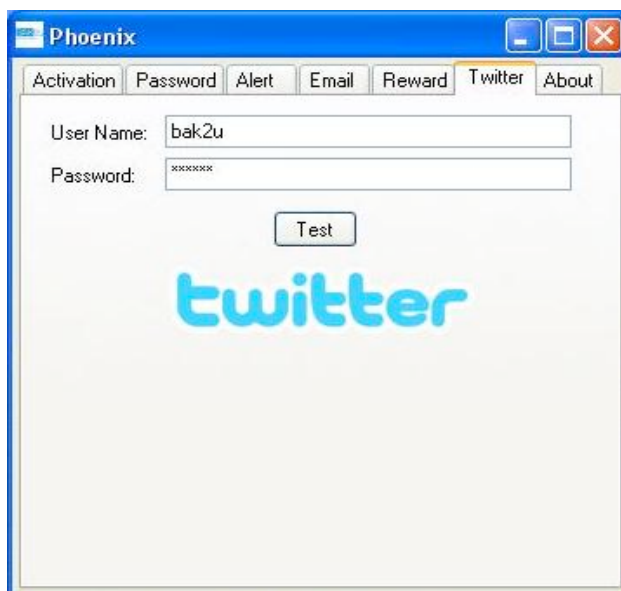
This notebook belongs to:

If found, please return it by contacting any of the following:

The following reward will be given for the successful return of this device:



www.bak2u.com



Twitter

Enter your twitter user name and password. More information about twitter at:

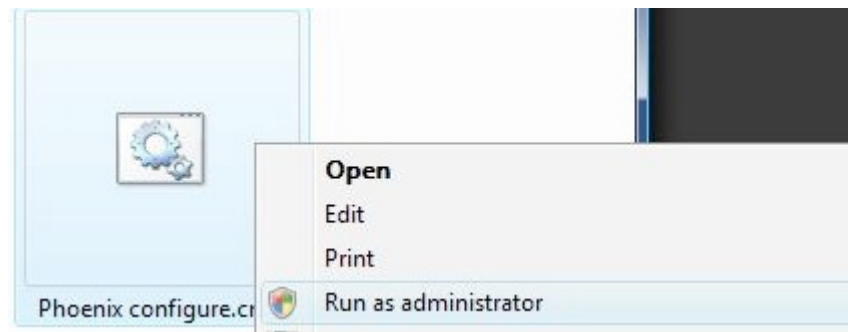
<http://www.twitter.com>

Count down timer configuration

Once you have configured and tested the settings of Phoenix, you can setup the countdown timer to run every time a user logs into the system.

To configure the countdown timer, go to the installed location of Phoenix. By default, it is located in "C:\Program Files\BAK2u\Phoenix for Vista\"

You will find a file named "**Phoenix Configure**". Right click on it and select "**Run as Administrator**" (as shown in the figure).



That's it!

You have now configured Phoenix to run with Admin Privileges. You can now restart the computer. You will notice that once you log into the system (with internet connection), a timeout window will popup asking for password. Type the password that you set up for Phoenix. To modify the settings, click Use Shift Key and right click on 'Phoenix' shortcut at desktop and select 'Run As'.

Questions?

Contact us @
<http://www.bak2u.com/contact>