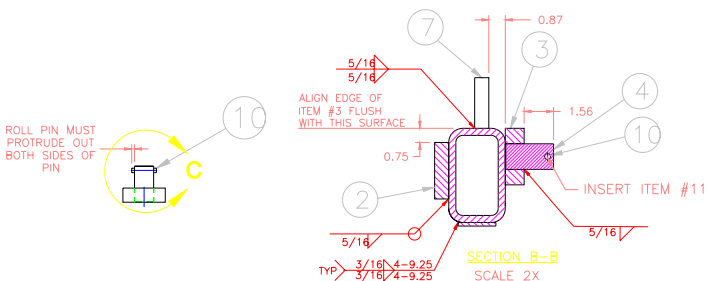


59002



THIS DOCUMENT CONTAINS PROPRIETARY
CONFIDENTIAL INFORMATION OWNED BY
HOLLAND EQUIPMENT LIMITED. THE
DOCUMENT AND THE INFORMATION IN IT
ARE NOT TO BE USED, DISCLOSED OR
REPRODUCED WITHOUT EXPRESS WRITTEN
PERMISSION OF THE COMPANY.

0.50

2.25

0.25 TYP

3/16 TYP

3/16 TYP

3/16 TYP

9



5

8

DETAIL A

SCALE 2:1

SOME DETAILS OMITTED FOR CLARITY

10	XB-21-SS315-175	1	ROLL PIN, STAINLESS, 5/16" DIA.x1.75" LG.		
9	XA-53187-02	2	PLATE, 2" x 2" x 1/4"		
8	XA-53176-00275	2	FLAT BAR, 3/8"x 2.00" x 2.75" LG.		
7	XA-58111	1	LUG		
6	XA-54508-00200	1	CHANNEL, C3 X4.1 X 2.00" LG.		
5	XA-58296-04100	1	PLATE, 3/16" x 2" x 41" LG		
4	XA-58058	1	PIN		
3	XA-58057	1	PIN MOUNT		
2	XA-64862-00300	1	FLAT BAR, 3/4" x 3.00" x 3.00" LG.		
1	XA-58161	1	RUNNER TUBE, LEFT		
DET	PART NO.	QTY.	DESCRIPTION		
TOLERANCES UNLESS OTHERWISE SPECIFIED .001 ± .15 ± .060 ANGLES 1°		SCALE 1:10 DATE 10/15/04 DRAWN BY WJH		HOLLAND EQUIPMENT LIMITED 	
 THIRD ANGLE PROJECTION		MATERIAL BORDER R		DESCRIPTION RUNNER WELDMENT, LEFT PART NUMBER XA-59002 DIR. LOC. 590 DWG. NUMBER 59002	