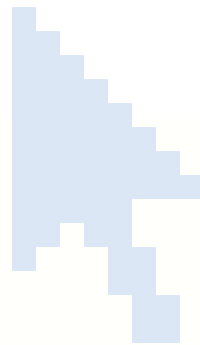




KEYfamily

Protect your children for good from dangers on the Internet



Quick Guide
Installing and Using
KEYfamily
v. 1.0
rev. 1.0.2

KEYfamily DIFFERENTIATED WEB SURFING SYSTEM

Dear Customer,

Thank you for choosing KEYfamily Differentiate Web Surfing System from GESTWEB Research KEYline.

We strongly recommend you to read this guide carefully to efficiently maintain and get the most from your KEYfamily software.

KEYfamily Differentiated Web Surfing System is the only worldwide to use patented **childKEY** technology.

KEYfamily lets parents to control children's Internet activities, to administer and set up web surfing policies for each child which are able to surf the web safely, thanks to our Dynamic Content Filtering KEYfamily can recognize the content of the requested page based on selected filters and profiles.

KEYfamily is the system for an optimum internet use with particular attention on protecting minors from the vision of not proper contents. It is important to read the full guide carefully to better understand how to configure web surfing policies for you needs.

Internet is a great resource and fortunately most of the contents are suitable to minors. Here KEYfamily Differentiated Web Surfing System is something the families can use to help their children to surf more safely; parents are the most important thing in the control process and they can use this key, KEYfamily, to open the doors of Internet to their children.

NOTE: for more informations or details about KEYfamily we suggest you to read the full user guide by downloading it at <http://support.gestweb.com>.

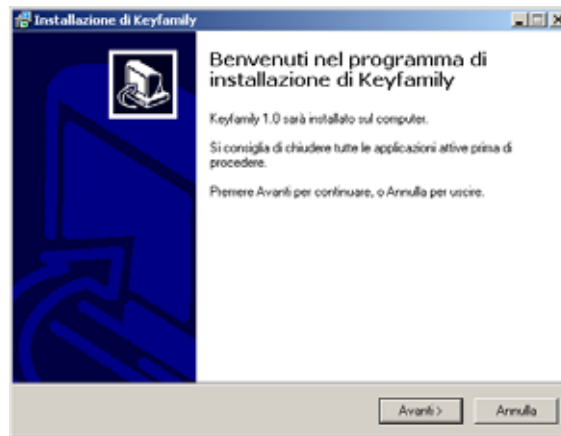
Summary

INSTALLING ON WINDOWS XP.	4
KEYfamily Admin Panel	7
INSTALLING ON Mac OS X.	8
Users settings	10
Using other browsers	11
USING KEYfamily IN FREE DEMO MODE	11
QUICK USE TO KEYfamily	12
KEYfamily administration window	13
HOW TO ACTIVATE/OBTAIN KEYfamily LICENSE	15
STARTING TO SURF WITH KEYfamily	16

QUICK INSTALL GUIDE TO KEYfamily

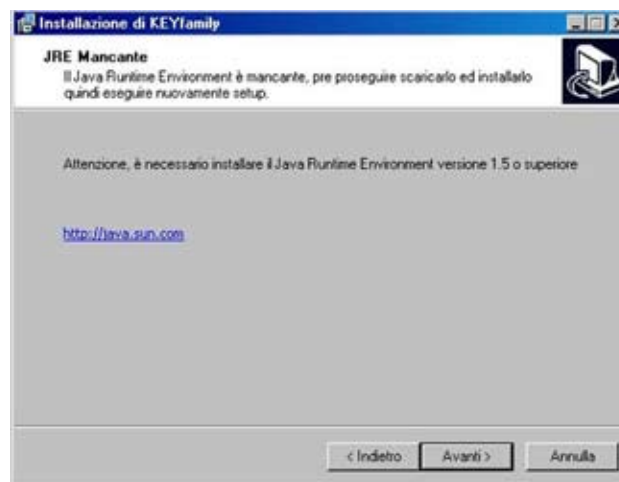
INSTALLING ON WINDOWS XP.

Download and unzip KEYfamily.zip file; start the installation process with the “setup.exe” file. Follow the instruction of the installation program..



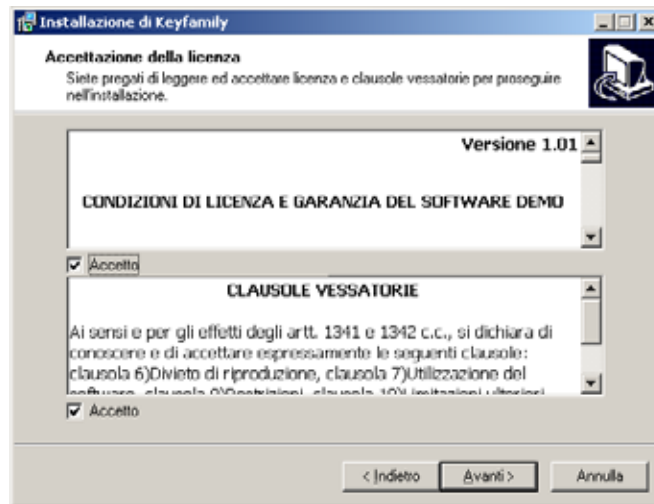
When “setup.exe” starts it checks if the proper Java Virtual Machine (JVM) is installed on your client. The JVM is necessary to run KEYfamily.

If not installed, the installer application will suggest the link to download the JVM. The link is: <http://java.com/en/download/index.jsp>

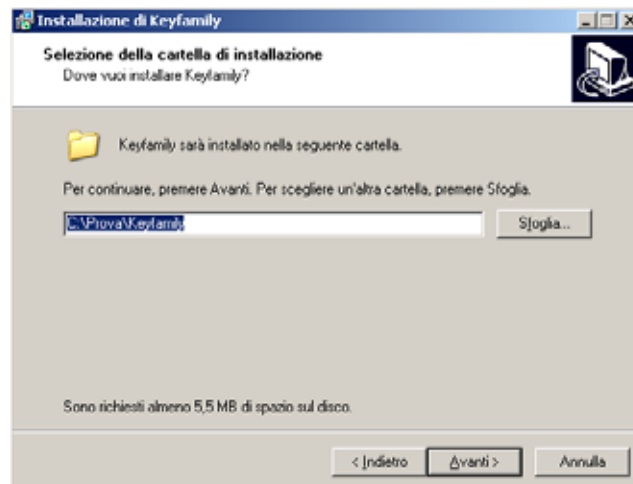


NOTE: if you download the compressed version (.zip) it is necessary to extract the entire package and NOT to start “setup.exe” file from within the unzip application (such as WinZip) but only once you extract the entire folder.

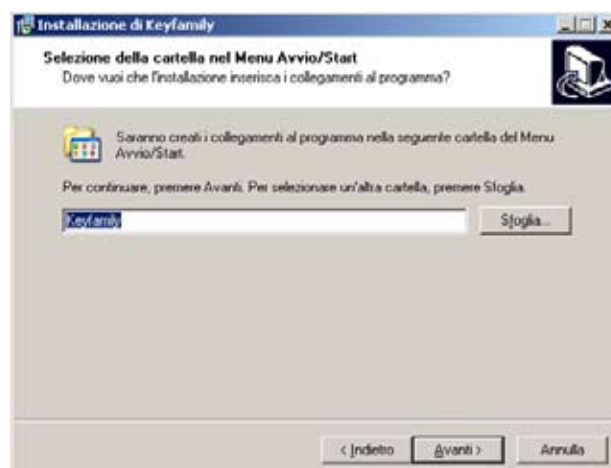
To proceed you need to accept the contract (the 2 checks)



You can choose a different installation path (we suggest to maintain the default one C:\Programmi\KEYfamily)



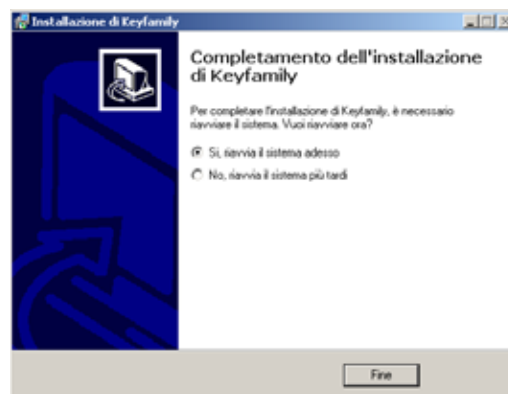
The following window shows you the path and the assigned name to the program in the START menu. It is possible to change location though this window.



Press “Install” button to finish the installation process.

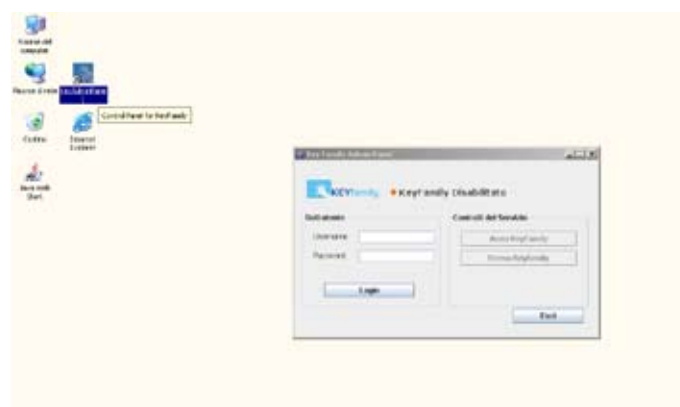


To start using KEYfamily you need to restart your PC.



ATTENTION: THE INSTALLER WILL INSTALL A SECURE SETUP THAT DISABLE THE CAPABILITIES TO CHANGE INTERNET SETTINGS FOR EXPLORER AND SET THE BROWSER READY TO USE KEYFAMILY (to use other browsers see page 10).

ON THE DESKTOP YOU’LL FIND A LINK TO THE KEYFAMILY ADMIN PANEL.



THROUGH THIS PANEL YOU CAN **DISABLE KEYFAMILY AND THE BROWSER SETTINGS**. TO ACCESS YOU NEED TO ENTER ROOT PASSWORD.

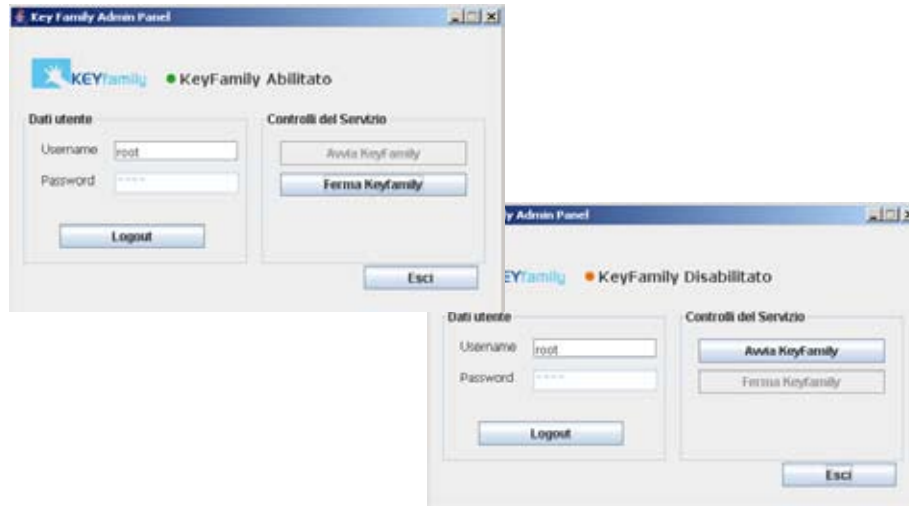
NOTE: if you use a multi user set up you need to start KEYfamily through the KEYfamily admin panel on the desktop (as shown before) in the account you want to protect.

KEYfamily Admin Panel

KEYfamily Admin Panel, as already said, is the application needed to stop KEYfamily as service and lets you access the Internet without passing through KEYfamily.

Root privileges are needed to use KEYfamily Admin Panel.

Insert Username and Password (default root:root) and login. On the right side you can stop or start the Differentiated Web Surfing System KEYfamily.



Press Logout and than Esc to quit the application.

NOTE: we suggest you to change root password to have you access to the KEYfamily administration protected and not modifiable

INSTALLING ON Mac OS X.

Once you have downloaded and decompressed KEYfamily.dmg disk image run "KEYfamily.pkg" file and follow the instruction.



To proceed you need to accept the license conditions.

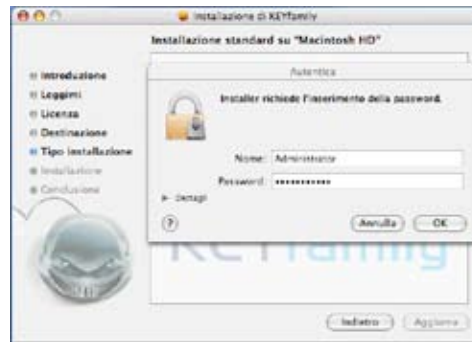


Select a destination disk.

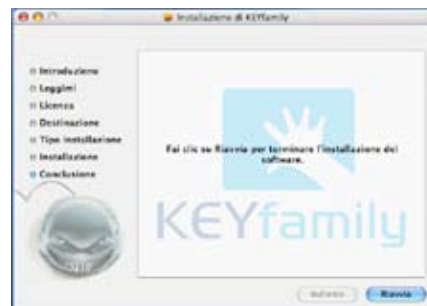
You'll need to restart after the installation. To finish press "Continue"



You need to authenticate with administration Username and Password to finish the installation process.



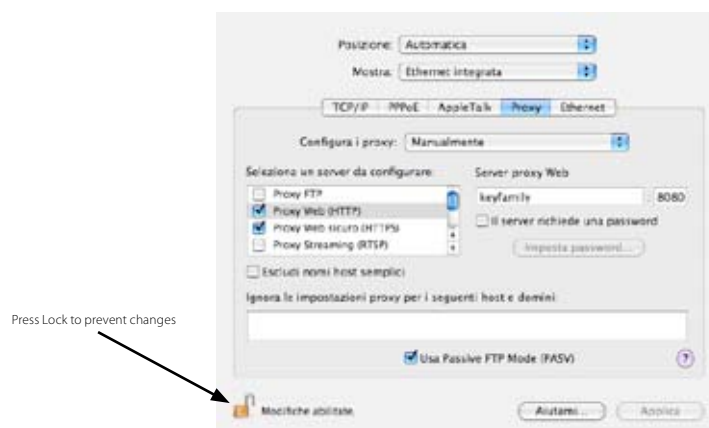
Now the installation process have finished. Now restart your computer.



KEYfamily is now active.

To use it is necessary to configure browser setting as follows.

Open "System Preferences" and select "Network" to configure proxy settings as follows:



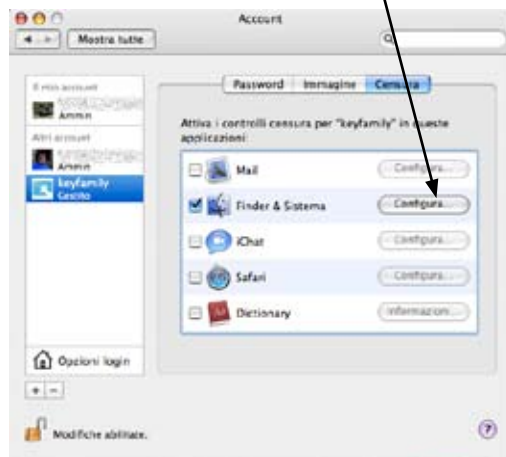
Once you configured Network setting we suggest you to lock to prevent further changes.

Users settings

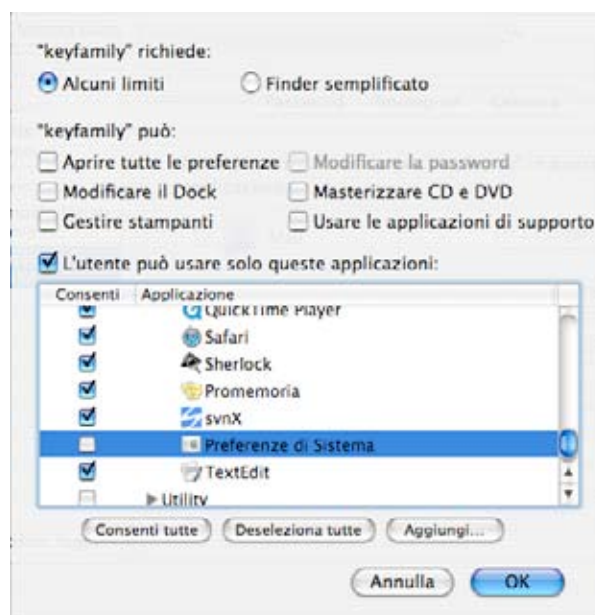
It is useful to configure User Account so that the child user can't change network and browser settings.
To do that select the user in:

System Preferences -> Accounts

Then go "Parental Controls", select "Finder & System" and press "Configure".



Limit the access to the System Preferences clicking the radio-button "Some Limits". Then check "This user can only use these applications" and uncheck:
"System Preferences"



In this way the child user won't access System Preferences and change Network Settings.

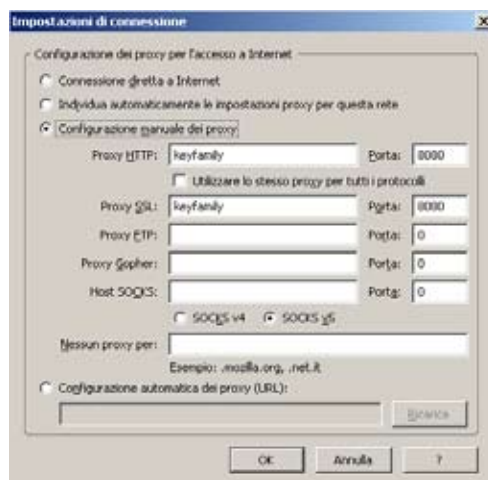
Using other browsers

KEYfamily is compatible with browsers like Firefox, Opera, Mozilla.

If you use a browser different from Internet Explorer you have to manually set up proxy configurations (Usually in the browser preferences panel) and enter the following informations:

proxy HTTP	keyfamily	port	8080
proxy HTTPS	keyfamily	port	8080

This is an example screenshot for Firefox browser.



USING KEYfamily IN FREE DEMO MODE

You can use KEYfamily as a free demo mode.

This mode involves some limits:

- 1 - the surfing time is fixed in 15 minutes per day;
- 2 - the only user enabled to surf is "root".

It is possible to configure users and groups without using them to surf.

15 minutes are the time you can spend surfing the Internet and they will not be used while you are configuring KEYfamily through the Administration window.

We suggest you to LOGOUT the Administration window before you start surfing.

QUICK USE TO KEYfamily

Once you installed KEYfamily and restarted you PC it is possible to access KEYfamily and start configuring it through your browser (see previous page to configure browsers different from Internet Explorer for Windows).
When you'll open your configured browser you'll be redirected to <http://keyfamily>, this only happens if you default page differs from (about:blank); otherwise you have to digit <http://keyfamily> in the URL.



The image shows the KEYfamily login interface. At the top is the KEYfamily logo, which consists of a blue square with a white hand icon and the text "KEYfamily" below it. Below the logo are two input fields: "Nome Utente" (Username) with the text "root" entered, and "Password" with the text "root" entered. To the right of the password field is a small orange arrow icon. At the bottom, there is a warning message in Italian: "ATTENZIONE! Premendo su 'Login' stai accettando le Condizioni di utilizzo della Rete".

To access the Administration window you have to enter default Username and Password as shown:

root - root

You'll be welcome as Super User; to start administer press "Admin"



The image shows the KEYfamily Super User dashboard. At the top is the KEYfamily logo. Below it, the text "WELCOME Super User" is displayed. There are two status indicators: "Your remaining time is: 0hours and 13minutes" and "Your remaining traffic is: unlimited". Below these are three buttons: "Logout" (with a hand icon), "Admin" (with a gear icon), and "Start Navigation" (with a magnifying glass icon). At the bottom, there are two log messages: "Last Login: 2006/11/21 15:28:24" and "Last Logout: User Logout".

NOTE: we suggest you to change root password to have you access to the KEYfamily administration protected and not modifiable

KEYfamily administration window

This is the screenshot for the KEYfamily administration window.

Summary window



This is the main window, Summary view, that shows the selected user profile. This is useful to have a general view of the user profile without entering each configuration panel.

Add users/groups

To add a user or group press "Add User" button and fill in the fields. The first user you must create is an Administrator. Then you can create users and groups for a maximum of 5 each. You can also add users/groups by selecting a user (for example "root") and press the right button of your mouse. A menu will appear.

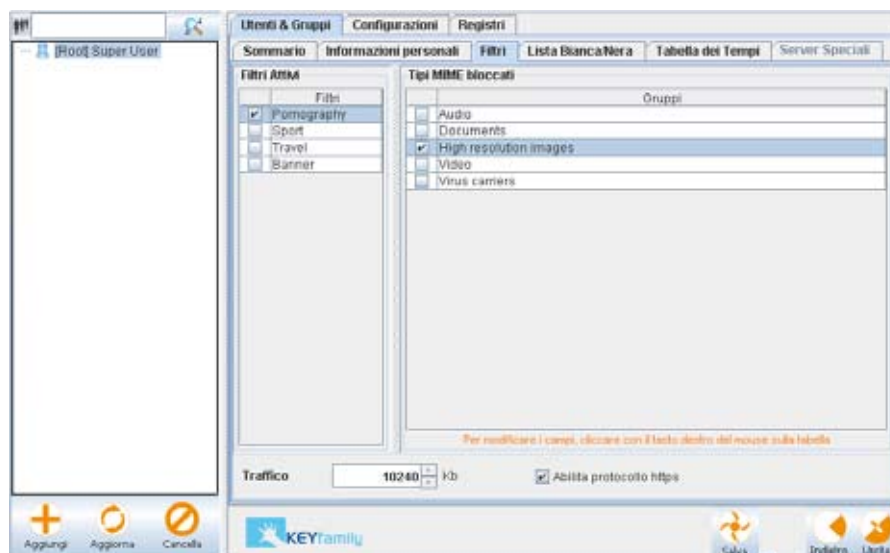
You must fill in the date to identify the minor user to the network.

Use filters

The "filters" panel shows you the different configurations for filters and Mime types. The "Pornography" filter, that includes paedophile/paedo-pornography, is already active for root user. When you add a new user it will have that filter enabled as default. It is important to have Pornography filter always enabled for minors. Check the filter you want to enable it.

MIME types are needed to prevent download/view of certain files such as images, video (wav, avi, ecc.), audio (mp3, acc, etc.) or executable (exe, etc.); these often causes installation of viruses or malwares.

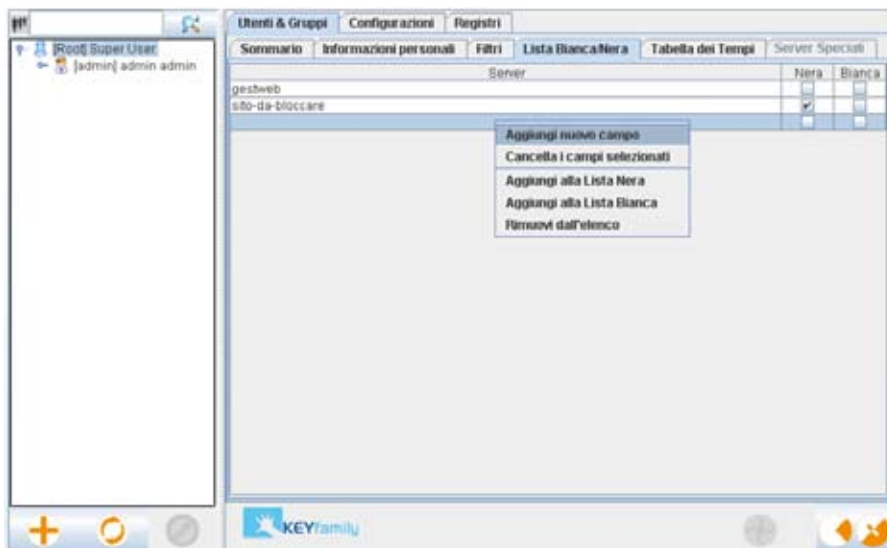
Check the MIME you want to enable it.



Using black/white lists

In the "Black/White list" it is possible to define domains you want to block or allow, even if the content filtering system is running. To use this function you just have to fill the domain (e.g. : google) you want to block (check "Black") or allow (check "White").

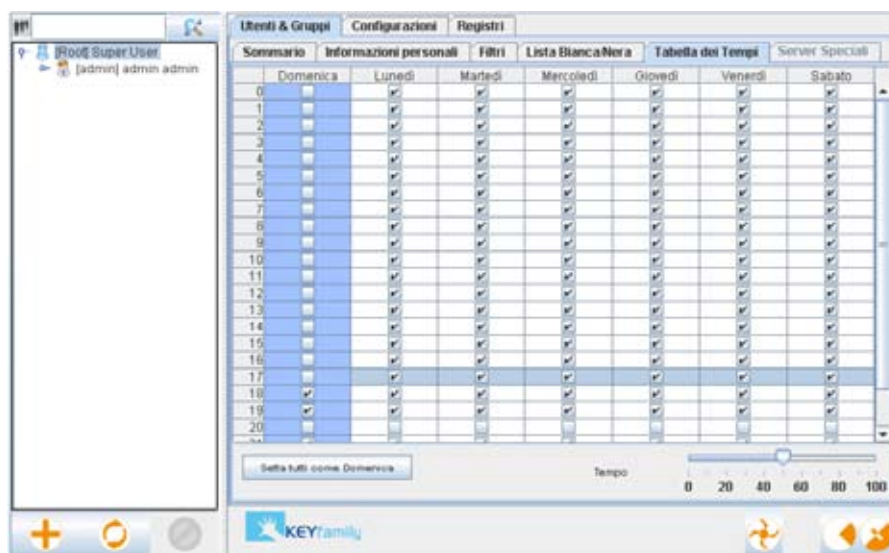
It is possible to define a "garden" mode that enables you to create a close list of domains. To configure "garden" mode it is enough to fill in the desired list of domains as "White" and fill in a domain "*" as "Black". Doing this will enable the garden mode and the user will see only the web sites inside that list. Root user can only set up Black lists.



Using the TLC "Time limit control" panel

From the TLC it is possible to define the time table when a user can login and surf the web. You can also define the percentage of usage. For example; select from 8 to 18 (10 hours) and select 50% of "Time Quota"; this means that the user will have 5 hours a day of surfing time.

If you set up Sunday as a master and press "Set as Sunday as Default" all the Sunday settings will be copied to the other days.



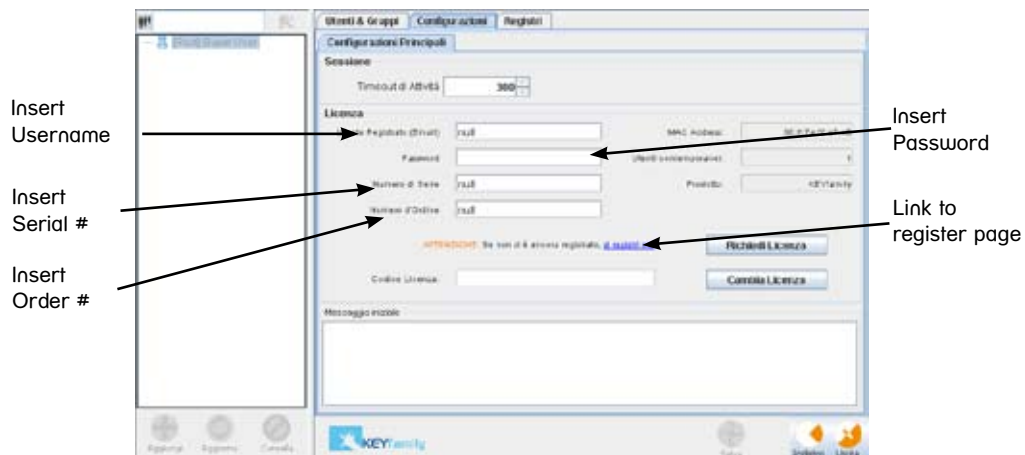
NOTE: the new user will inherit the user (root or admin) profile, filters, black/white lists, blocked mime types and time table. For example the Administrator will inherit root profile and the user will inherit root+administrator profile. You can have personal profile for each user.

HOW TO ACTIVATE/OBTAIN KEYfamily LICENSE

To obtain KEYfamily license it is necessary to buy it on our online store (www.gestweb.com/en/keyfamily) or contact us in GESTWEB Research.

If you downloaded the free demo version or you bought KEYfamily , you already registered GESTWEB Research support web site "support.gestweb.com".

Username and password to choose will be used to register your copy of KEYfamily.



KEYfamily will get the license directly from GESTWEB Research server as follows:

- 1) Go on support.gestweb.com and register an account; if you already have one go to next step.
During the registration process you will ask to insert your email address; this will be your username to access support.gestweb.com and to activate the license.
- 2) Login KEYfamily as root user and go to "Config" tab in the Admin Window.
- 3) Insert license informations:
Username: registered user email address
Password: registered user password
Order Number: you can find it in the automatically generated email after you buy KEYfamily
Serial Number: you can find it in the automatically generated email after you buy KEYfamily
- 4) Press "Get License".

KEYfamily will download the license and you'll see the code in the field "License Code".

STARTING TO SURF WITH KEYfamily

Once you create users to surf the web with KEYfamily, users can login with their on Username and Password and press “Start Navigation” button.



The user will be recognize and he will surf with the privileges that root or the administrator gave to him.

To come back to the login window you have to digit <http://keyfamily/> in the browser bar.



NOTE: for more informations or details about KEYfamily we suggest you to read the full user guide by downloading it at <http://support.gestweb.com>.



www.gestweb.com
info@gestweb.com

gestweb research
headquarter:
viale Bornata, 9
25123 Brescia - Italy
Tel.: +39 (030) 3367097
Fax: +39 (030) 3369609