



Firmware Version: 4.00.064
Boot Code Version: 1.00.016
MIB Version: 4.00.015
D-View Module Version: 4.0.0.2
Published: Feb. 02, 2015

These release notes include important information about D-Link switch firmware revisions. Please verify that these release notes are correct for your switch:

- If you are installing a new switch, please check the hardware version on the device label; make sure that your switch meets the system requirement of this firmware version. Please refer to [Revision History and System Requirement](#) for detailed firmware and hardware matrix.
- If the switch is powered on, you can check the hardware version by typing "show switch" command via Telnet or by checking the device information page on the web graphic user interface.
- If you plan to upgrade to the new firmware release, please refer to the [Upgrade Instructions](#) for the correct firmware upgrade procedure.

For more detailed information regarding our switch products, please refer to [Related Documentation](#).

You can also download the switch firmware, D-View modules and technical documentation from <http://tsd.dlink.com.tw>.

Content:

Upgrade Instructions:	2
Upgrade using CLI (via Telnet).....	2
Upgrade using Web-UI.....	3
Upgrade using D-Link Network Assistant.....	5
New Features:.....	8
Changes of MIB & D-View Module:.....	8
Changes of Command Line Interface:	9
Problem Fixed:	9
Known Issues:	10
Related Documentation:	10

Revision History and System Requirement:

Firmware Version	Date	Model	Hardware Version
Runtime: v4.00.055 Boot: 1.00.016	06- Oct.-14	DGS-1210-10	C1
Runtime: v4.00.064 Boot: 1.00.016	02- Feb.-15	DGS-1210-10	C1

Upgrade Instructions:

D-Link Smart Switches support firmware upgrade via TFTP server. You can download the firmware from D-Link web site <http://tsd.dlink.com.tw>, and copy the downloaded firmware to the TFTP server folder. Please make sure that the TFTP server is accessible from the switch via networks.

Upgrade using CLI (via Telnet)

1. Make sure the network connection between the switch and PC is active.
2. Use software that supports telnet, for example, HyperTerminal or Telnet command in Microsoft Windows, to connect to the switch. If you are using Telnet command, type the command followed by the switch IP address, eg. *telnet 10.90.90.90*.
3. The logon prompt will appear.

The switch will prompt the user to enter his/her username and password. It should be noted that upon the initial connection, both the default user name and password are **admin**.

To upgrade the switch firmware, execute the following command:

Command	Function
download{firmware_fromTFTP tftp://ip-address/filename cfg_fromTFTP tftp://ip-address/filename}	Download firmware file from the TFTP server to the switch.

When completing firmware upgrade, the following messages will pop up.

```
Device will reboot after firmware upgraded successfully
Image upgraded successfully
```

4. Execute the following command to check the firmware version and switch's information.

Command	Function
---------	----------

show switch

Display the information of current firmware and boot version.

Example:

1. DGS-1210-10:

Command: download firmware_fromTFTP tftp://10.90.90.91
DGS-1210-52P-C1-4-00-055.hex
Device will reboot after firmware upgraded successfully
Image upgraded successfully

2. DGS-1210-10:

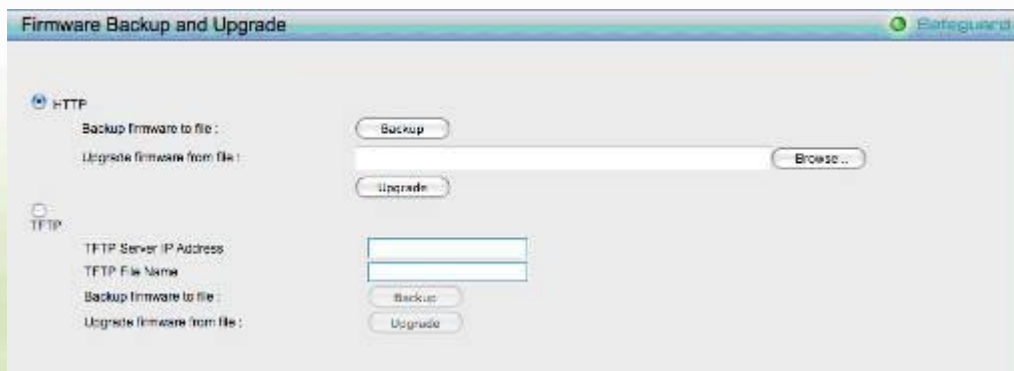
```
Command: show switch
DGS-1210-52P> show switch
System name                :
System Contact              :
System Location             :
System up time              : 0 days, 0 hrs, 2 min, 31 secs
System Time                 : 01/01/2014 00:02:19
System hardware version     : C1
System firmware version     : 4.00.055
System boot version         : 1.00.016
System serial number        : QBDES12105200
MAC Address                 : 9C-D6-43-AA-58-77
```

Upgrade using Web-UI

1. Connect a workstation installed with java SE runtime environment to any switch port of the device.
2. Open the web browser from the workstation and enter the IP address of the switch. The switch's default IP address is 10.90.90.90.
3. Enter administrator's password when prompted. The password is **admin** by default.
4. To update switch's firmware or configuration file, select **Tools > Firmware Backup & Upgrade** from the banner.

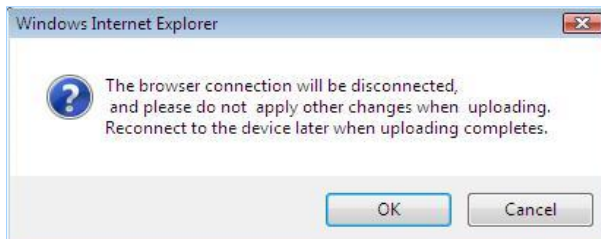


5. Two methods can be selected : **HTTP** or **TFTP**

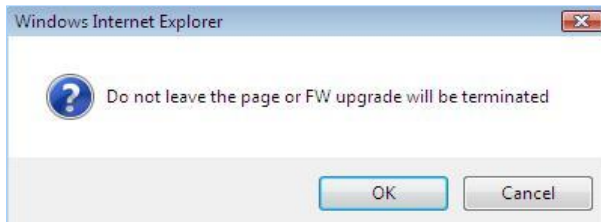


- a. Click **Browse** to browse your inventories for a saved firmware file

- b. Click **Upgrade** after selecting the firmware file you want to restore
- c. Click **OK** to continue with firmware upgrade



- d. Click **OK** to continue with firmware upgrade



- e. Wait until the "Firmware Upgrade Successful" message pops up and login again after device boots up.



7. Select **TFTP** to upgrade the firmware to or from a remote TFTP server.
 - a. Enter the name of the firmware file located on the TFTP server
 - b. Click **Upgrade** after selecting the firmware file you want to restore
 - c. Click **OK** to continue with firmware upgrade

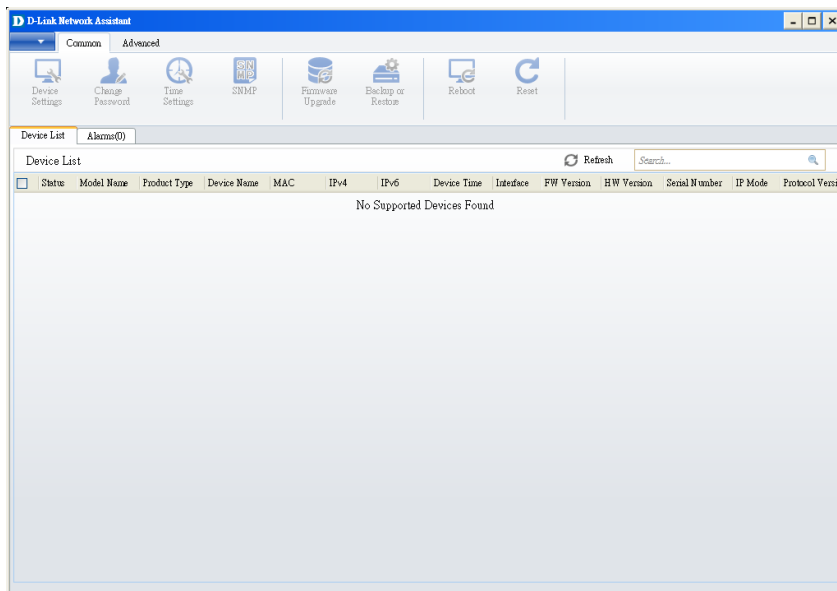


- d. Wait until the firmware upgrade ends and login again after device boots up.

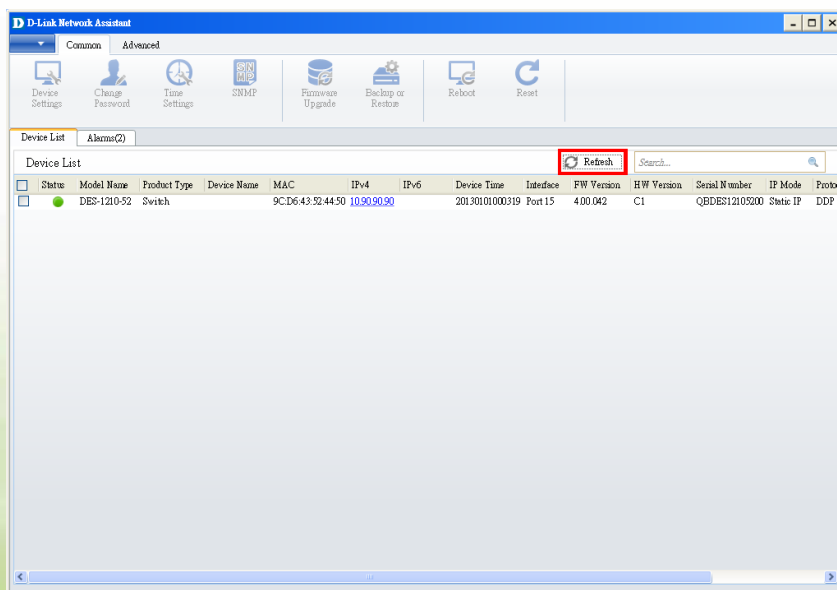


Upgrade using D-Link Network Assistant

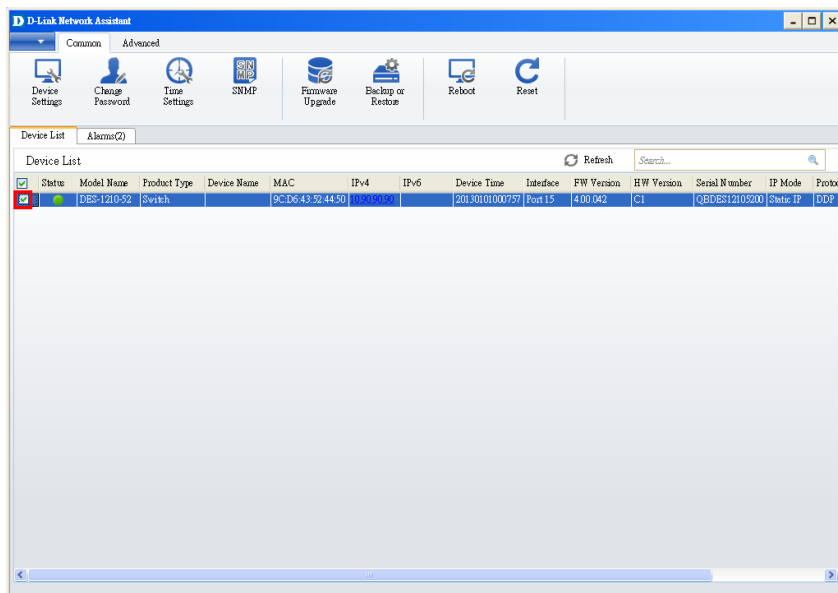
1. Connect a workstation installed with java SE runtime environment to any switch port of the device
2. Execute D-Link Network Assistant



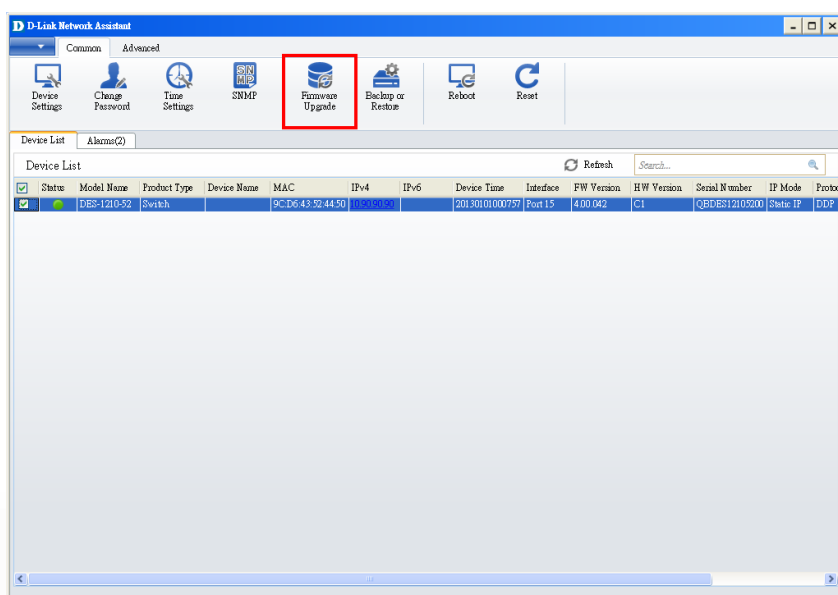
3. Click Refresh button to search target switch



4. Single click the icon of the column to choose the target switch



5. Click Firmware Upgrade button



6. Select PC IP address is used to connect the target switch, then click Browse button and select the firmware file (Model name_HW ver._FW ver. .hex) on your local hard drive.

Firmware Upgrade

1 Firmware Upgrade 2 Confirm Summary

TFTP IP: 10.90.90.89

Upgrade Selection: ☒ Use one firmware file for all devices ☐ Use a different firmware file for each device

Firmware File: D:\DES-1210-52-CI-4-00-042-ALL.hex **Browse**

Next

7. Click the checkbox and click "Submit" button to start firmware upgrade.

Firmware Upgrade

1 Firmware Upgrade 2 Confirm Summary

TFTP IP: 10.90.90.89 Firmware File: D:\DES-1210-52-CI-4-00-042-ALL.hex

Apply to All Devices

IsSupported	Model Name	MAC	IP Address	Serial Number
Yes	DES-1210-52	9C:D6:43:52:44:50	10.90.90.90	QDESD12103200

☒ I understand the risks

Warning: Do not disconnect the network or close this program during the upgrade process; unrecoverable damage to the devices may result. Please note that during the upgrade process, your devices may reboot.

Authentication: User Name: admin Password: *****

Previous **Submit**

8. Once the message changed to success, click "Close" button to complete and exit the firmware upgrade

Firmware Upgrade

1 Firmware Upgrade 2 Confirm Summary

Result

Result	Model Name	MAC	IP Address	Details
✓	DES-1210-52	9C:D6:43:52:44:50	10.90.90.90	Command has been successfully executed

Close

New Features:

Firmware Version	New Features
V4.00.055	First Release
V4.00.064	N/A

Changes of MIB & D-View Module:

The new features of MIB file are also included in the corresponding D-View module. Please download the D-View module from <http://tsd.dlink.com.tw>. For detailed changes of MIB content, please refer to the modification history in each MIB file.

Firmware Version	MIB File	New Features
V4.00.055	DGS-1210-10-CX-4-00-015.mib	First Release
V4.00.064	DGS-1210-10-CX-4-00-015.mib	N/A

Firmware Version	D-View Module File	New Features
V4.00.055	DView_DGS-1210-10_4.0.0.2_setup.exe	First Release
V4.00.064	DView_DGS-1210-10_4.0.0.2_setup.exe	N/A

Changes of Command Line Interface:

The section below only shows command line changes that may bring backward compatibility issues with configuration settings for previous version of firmware.
Any new feature commands that do not have backward compatibility issues are not included in the below section.

Firmware Version	Changes
V4.00.055	First Release
V4.00.064	N/A

Problem Fixed:

Firmware Version	Problems Fixed
V4.00.055	First Release
V4.00.064	This firmware is to emend German Web GUI error wordings.

* D-Link tracking number is enclosed in ()

Known Issues:

Firmware Version	Issues	Workaround
V4.00.055	<ol style="list-style-type: none"> 1. After DUT warm/cold start, SNMP host will only receive cold start trap and link up trap. [DBG14100240] 2. Web UI will not pop-out error message when assign incorrect ACL IPv4 address(Ex:256.255.255.255).[DBG14100248] 3. Use OID (1.3.6.1.4.1.171.10.76.33.1.9.3.1.2) to get static mac address via SNMP will return wrong MAC value.[DBG14100164] 4. When Loopback Detection is disabled, LACP does not work. 	Will fixed in future version (V4.10)
V4.00.064	N/A	

Related Documentation:

- DGS-1210-10 Series User Manual
- DGS-1210-10 Series Getting Started Guide